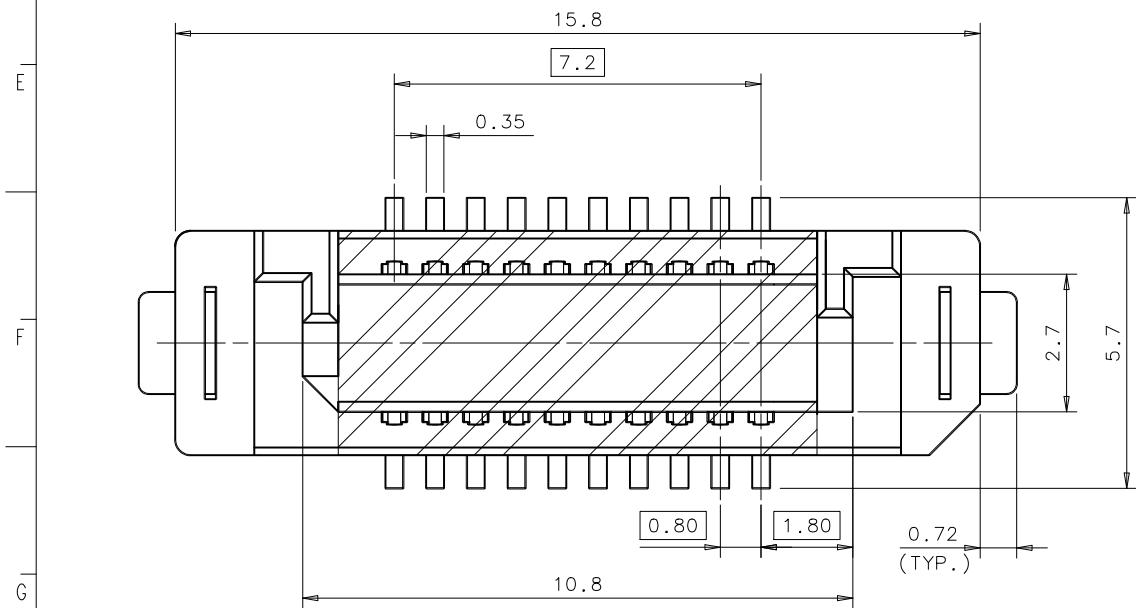
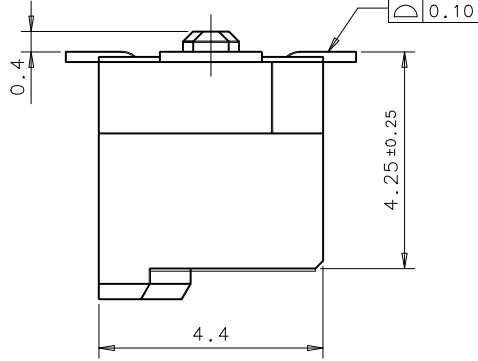
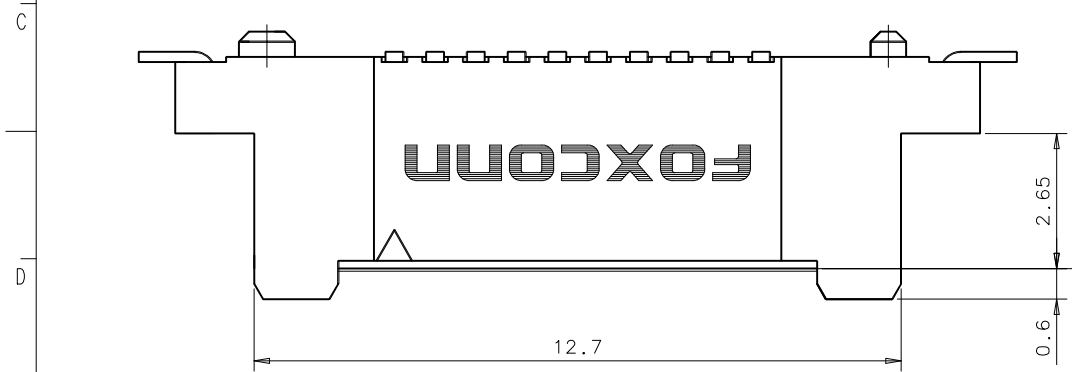
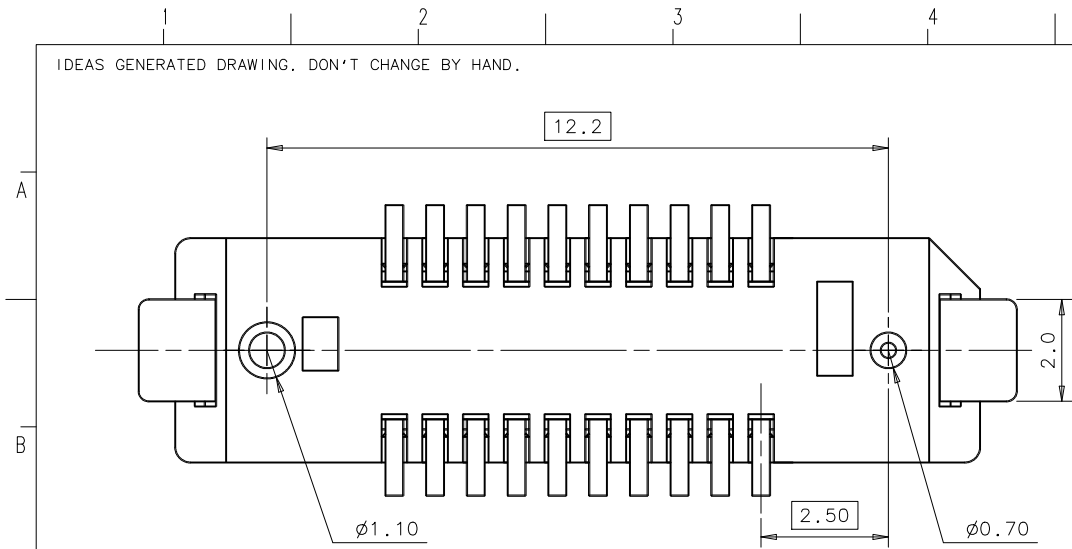


IDEAS GENERATED DRAWING. DON'T CHANGE BY HAND.

| REV. | ECN. NO. | APPD.    |
|------|----------|----------|
| A    | HCO65270 | Bruce Wu |

NOTES:

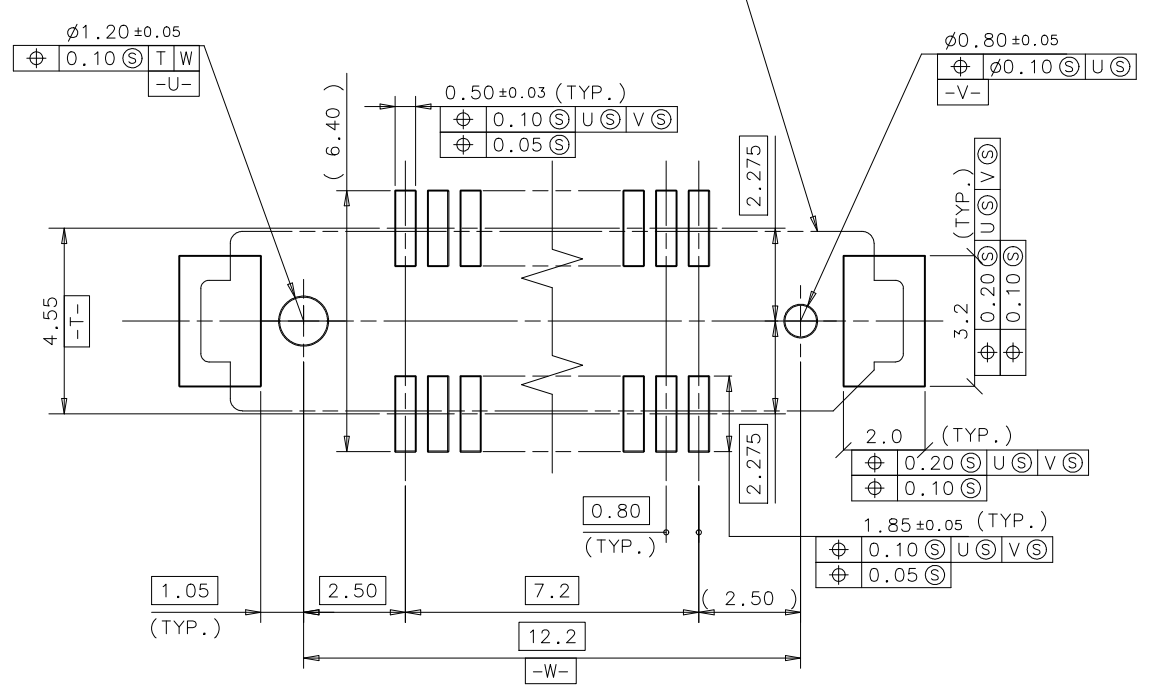
- DIMENSIONS SHALL BE INTERPRETED PER ANSI Y14.5M-1994.
- TAIL COPLANARITY TO BE 0.10mm MAX.
- ELECTRICAL CHARACTERISTICS
  - CONTACT CURRENT RATING: 0.5 AMPERE D.C MAX., CONTINUOUSLY.
  - LOW LEVEL CONTACT RESISTANCE: 40 MILLIOHMS MAX. (INITIAL), 50 MILLIOHMS MAX. AFTER PHYSICAL AND ENVIRONMENTAL TESTING.
  - DIELECTRIC WITHSTANDING VOLTAGE: 300 VAC FOR 1 MINUTE.
  - INSULATION RESISTANCE: 100 MEGOHMS MIN.
- MECHANICAL CHARACTERISTICS
  - DURABILITY (MATING CYCLES): 100 CYCLES.
  - VIBRATION: PASSED MIL-STD-202F, METHOD 201.
  - SHOCK: PASSED MIL-STD-202F, METHOD 213, CONDITION A.
  - MATING FORCE: 100g MAX. PER CONTACT.
  - UN-MATING FORCE: 10g MIN. PER CONTACT.
- ENVIRONMENT PERFORMANCE
  - OPERATING TEMPERATURE RANGE: -55°C TO +85°C.
  - THERMAL SHOCK: PASSED MIL-STD-202F, METHOD 107, CONDITION A.
- PLEASE CONTACT FOXCONN SALES REPRESENTATIVE TO VERIFY PRODUCT DETAIL & AVAILABILITY.



QT80020A-1111-8F  
 POS. NO  
 020: 20POS.  
 CONTACT AREA PLATING  
 A: GOLD PLATING  
 PRODUCT HEIGHT:  
 1: H=4.25mm

LEAD FREE CODE  
 F: LEAD FREE  
 PACKAGE CODE  
 8: TAPE & REEL W/ PI-FILM  
 METAL EAR  
 1: W/ METAL EAR  
 POST  
 1: W/ POST

OUTLINE OF THE CONNECTOR



RECOMMENDED PCB LAYOUT (TOP VIEW)

|   |          |        |    |                         |   |  |
|---|----------|--------|----|-------------------------|---|--|
| X. ± 0.5  | X.° ± 1° | UNITS  | mm | NAME (INTENDED USE)     | 0.8mm PITCH BOARD TO BOARD CONN. (PLUG) | <b>FOXCONN</b><br>HON HAI PRECISION IND. CO., LTD.<br>TAIPEI, TAIWAN, R.O.C. |
| .X ± 0.3  | .X° ±    | MAT'L  |    | PART NO. (INTENDED USE) | QT80NNNA-1111-8F                        | TITLE:<br>CUSTOMER DRAWING   |
| .XX ± 0.2   | .XX° ±   | FINISH |    | APPD:                   | Bruce Wu 5/10'06                        | DWG NO.:<br>323-0000-1319  |
| .XXX ±  | .XXX° ±  | Q'TY   |    | CHKD:                   | Colin Pan 5/10'06                       | SCALE SHEET REV.<br>N/A 1/1 A  |
| <small>THESE DRAWINGS AND SPECIFICATIONS ARE THE PROPERTY OF HON HAI PRECISION IND. CO., LTD. AND SHALL NOT BE REPRODUCED, COPIED OR USED IN ANY MANNER WITHOUT THE PRIOR WRITTEN CONSENT OF HON HAI PRECISION IND. CO., LTD.</small> |          |        |    | DR:                     | Qian Zhenhua 5/9'06                     |  |