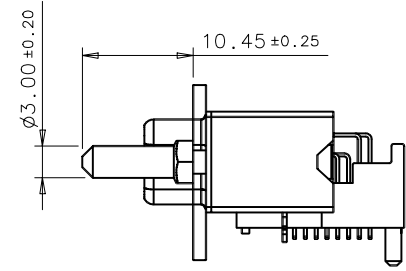
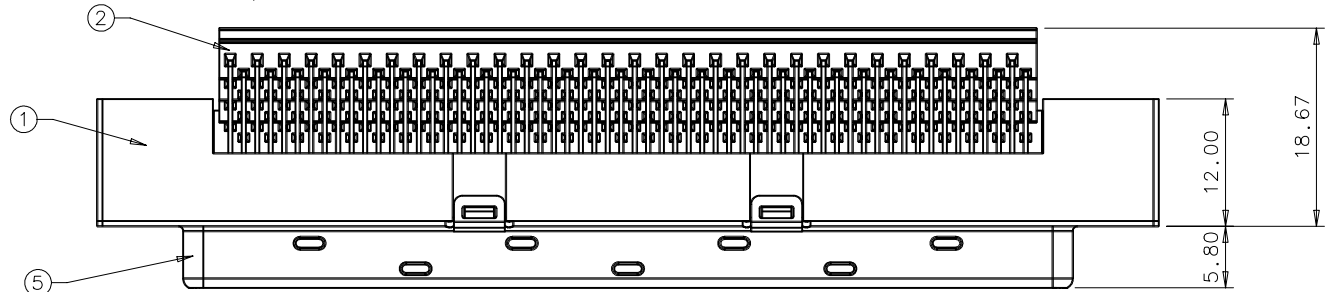
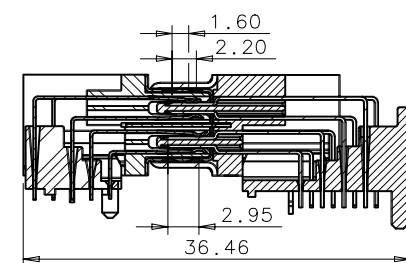


IDEAS GENERATED DRAWING, DON'T CHANGE BY HAND.

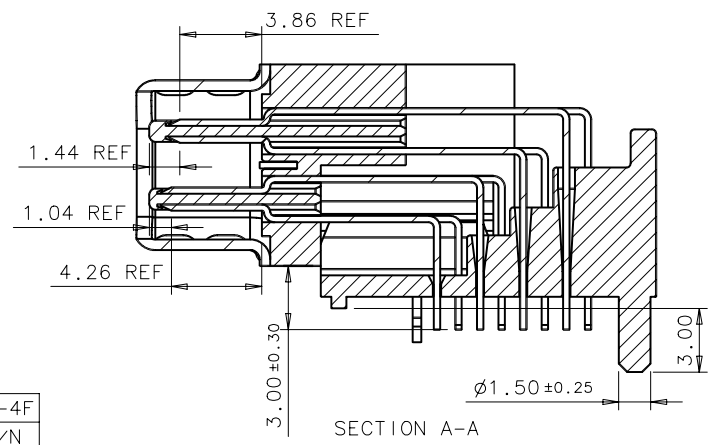
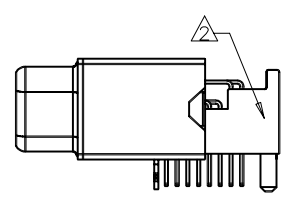
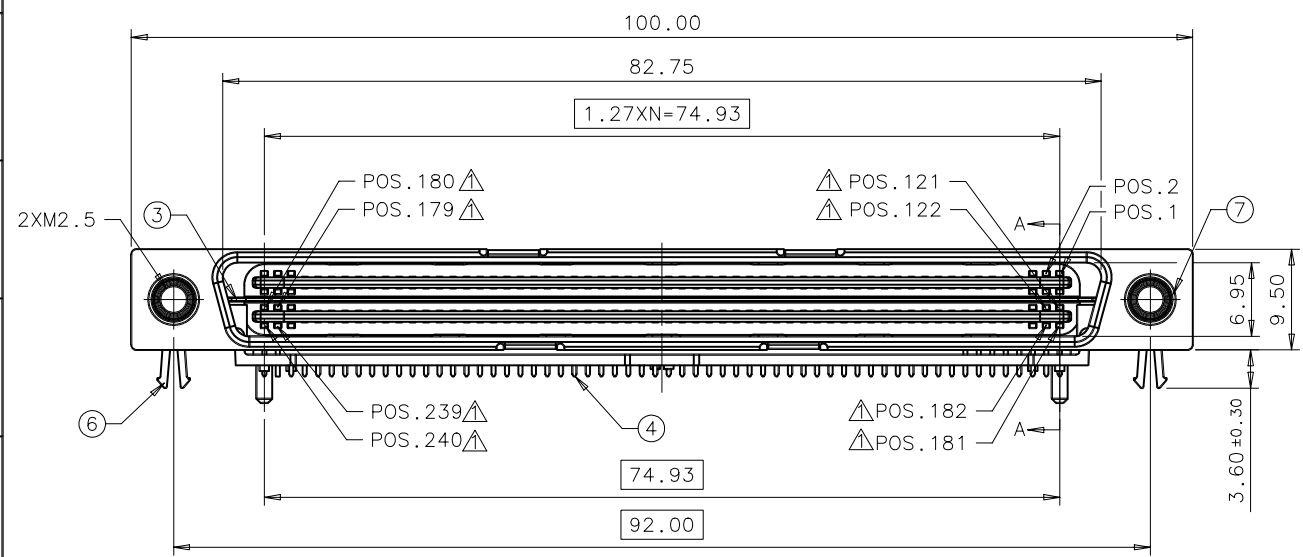
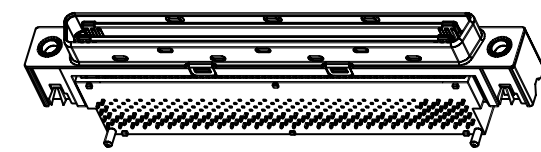
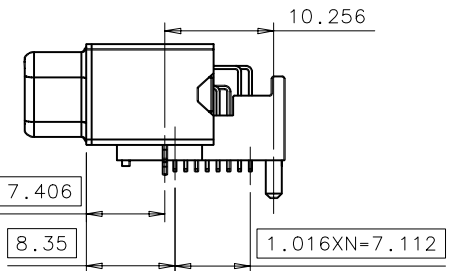
REV.	ECN. NO.	APPD.
A	HC-99-1391	G.X.Shih
B	IC-00-4352	G.X.Shih
C	HC-05-3586	Paul Huang



PANEL MOUNT DWG



MATED VIEW



SECTION A-A

NOTES:
 ▲ FIRST IN LAST OUT CONTACTS NO.: 121, 122, 179, 180, 181, 182, 239, 240.
 △ REFERENCE MODEL AS FLOATING SPACER IS PUSHED BACK.

QL10603-B103	QL10603-B103-4F
P/N	LEAD-FREE P/N

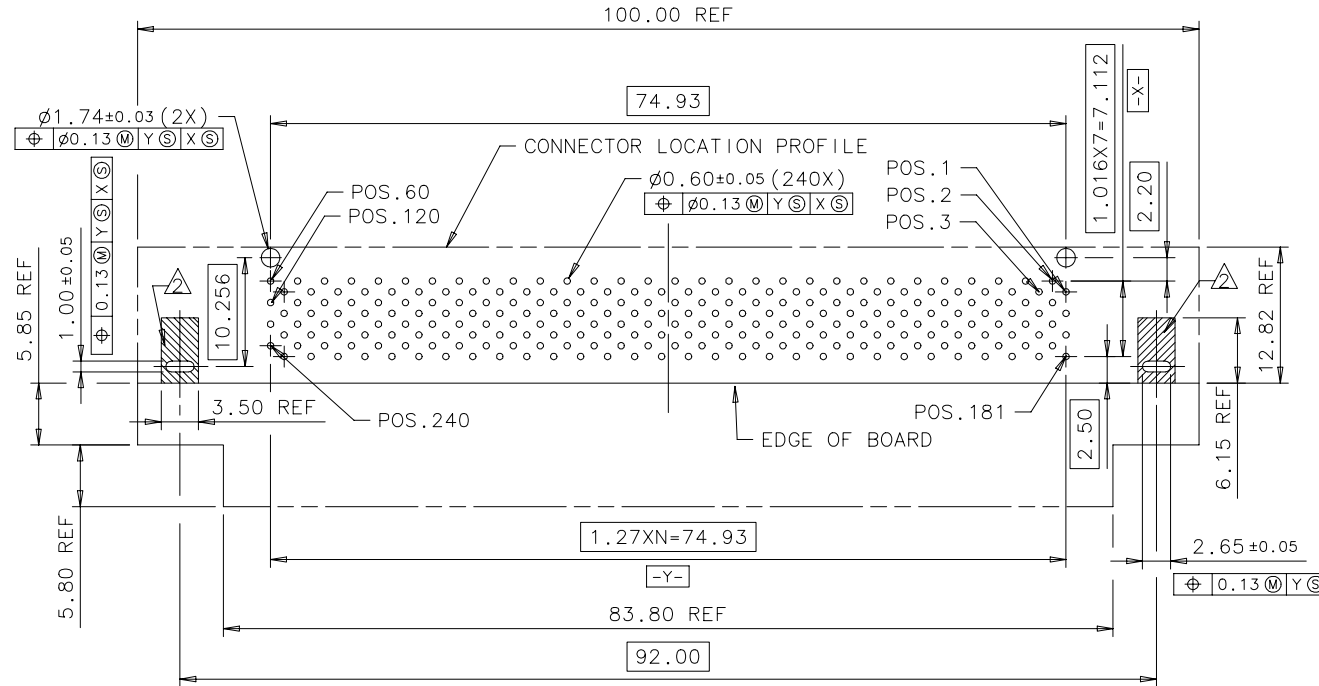
X. ±	X*. ±	UNITS mm	NAME (INTENDED USE)	FOXCONN HON HAI PRECISION IND. CO., LTD. TAIPEI, TAIWAN, R.O.C.
.X ± 0.30	.X* ±	MAT'L	DOCKING 1.27PITCH 240POS PLUG CONNECTOR	
.XX ± 0.25	.XX* ±	FINISH	PART NO. (INTENDED USE)	TITLE:
.XXX ±	.XXX* ±		QL10603-B103(-4F)	CUSTOMER DRAWING
THESE DRAWINGS AND SPECIFICATIONS ARE THE PROPERTY OF HON HAI PRECISION IND. CO., LTD. AND SHALL NOT BE REPRODUCED COPIED OR USED IN ANY MANNER WITHOUT THE PRIOR WRITTEN CONSENT OF HON HAI PRECISION IND. CO., LTD.			APPD: Paul Huang 4/20'05	DWG NO.: 353-0000-006
Q'TY	CHKD: Y.H. Mao 4/20'05	DR: Xue-qing Zhang 4/20'05	SCALE SHEET REV.	
			N/A	1/2 C

IDEAS GENERATED DRAWING, DON'T CHANGE BY HAND.

REV.	ECN. NO.	APPD.

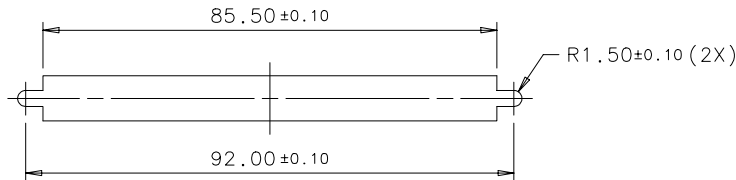
PRODUCT NO. : Q L 1 0 6 0 3 - B 1 0 3 - (4 F)

QL=DOCKING CONN.
 1=RIGHT ANGLE
 0=PLUG CONN.
 60=240 POS
 3=30u" GOLD
 (CONTACT PLATING)
 B=1.27mm PITCH
 1=PARALLEL 4 ROWS
 03=EXTENDED CODE
 PACKAGE MODE
 BLANK=SOFT TRAY
 4F=SOFT TRAY & LEAD FREE



RECOMMENDED P.C.B LAYOUT COMPONENT SIDE

RECOMMENDED P.C.B, THICKNESS: 1.60±0.20mm FOR QL10603-B102(-4F)
 RECOMMENDED P.C.B, THICKNESS: 2.20±0.20mm FOR QL10603-B103(-4F)



RECOMMENDED PANEL CUTOUT

NOTES:

1. PERFORMANCE:

1-1. ELECTRICAL CHARACTERISTICS:

- 1-1-1. CONTACT CURRENT RATING: 0.8 AMPERE MAX.
- 1-1-2. CONTACT RESISTANCE: 75mOHMS MAX INITIAL.
ΔR 25mOHMS MAX.
- 1-1-3. DIELECTRIC WITHSTANDING VOLTAGE: 500V AC RMS.
- 1-1-4. INSULATION RESISTANCE: 100MOHMS MIN.
- 1-1-5. OPERATING VOLTAGE: 125V AC RMS MAX.

1-2. MECHANICAL CHARACTERISTICS:

- 1-2-1. CONNECTOR MATING FORCE: 6.80Kgf MAX INITIAL.
- 1-2-2. CONNECTOR UNMATING FORCES: 2.00Kgf~5.00Kgf.
- 1-2-3. OPERATING TEMPERATURE: -55°C TO +85°C.
[INCLUDING TERMINAL TEMPERATURE RISE].
- 1-2-4. DURABILITY: 5000 CYCLES.

TRACK KEEP OUT ZONE.

ITEM	DESC.	Q'TY	MATERIAL	TREATMENT	REMARK																																
7	NUT	2	BRASS	TIN PLATING OVER NICKEL UNDERPLATING																																	
6	BOARD LOCK	2	PHOSPHOR BRONZE	TIN PLATING OVER NICKEL UNDERPLATING																																	
5	SHELL	1	CARBON STEEL	NICKEL PLATING																																	
4	CONTACT	240	BRASS	NICKEL UNDERPLATING TIN/LEAD PLATING AT SOLDERING AREA FOR QL10603-B10* TIN PLATING AT SOLDERING AREA FOR QL10603-B10*-4F GOLD PLATING AT CONTACT AREA																																	
3	BLADE	1	STAINLESS STEEL	ULTRASONIC CLEANING																																	
2	SPACER	1	L.C.P UL94V-0	MOLDED COLOR:NATURAL																																	
1	HOUSING	1	L.C.P UL94V-0	MOLDED COLOR:NATURAL																																	
<table border="1"> <thead> <tr> <th>UNITS</th> <th>mm</th> <th>NAME (INTENDED USE)</th> <th>FOXCONN</th> </tr> </thead> <tbody> <tr> <td>X. ±</td> <td>X*. ±</td> <td>DOCKING 1.27PITCH 240POS PLUG CONNECTOR</td> <td>HON HAI PRECISION IND. CO.,LTD. TAIPEI, TAIWAN, R.O.C.</td> </tr> <tr> <td>.X ± 0.30</td> <td>.X* ±</td> <td>PART NO. (INTENDED USE)</td> <td>TITLE:</td> </tr> <tr> <td>.XX ± 0.25</td> <td>.XX* ±</td> <td>QL10603-B103(-4F)</td> <td>CUSTOMER DRAWING</td> </tr> <tr> <td>.XXX±</td> <td>.XXX* ±</td> <td>APPD: Paul Huang 4/20'05</td> <td>DWG NO.:</td> </tr> <tr> <td></td> <td></td> <td>CHKD: Y.H. Mao 4/20'05</td> <td>353-0000-006</td> </tr> <tr> <td></td> <td></td> <td>DR: Xue-qing Zhang 4/20'05</td> <td>SCALE SHEET REV.</td> </tr> <tr> <td></td> <td></td> <td></td> <td>N/A 2/2 C</td> </tr> </tbody> </table>					UNITS	mm	NAME (INTENDED USE)	FOXCONN	X. ±	X*. ±	DOCKING 1.27PITCH 240POS PLUG CONNECTOR	HON HAI PRECISION IND. CO.,LTD. TAIPEI, TAIWAN, R.O.C.	.X ± 0.30	.X* ±	PART NO. (INTENDED USE)	TITLE:	.XX ± 0.25	.XX* ±	QL10603-B103(-4F)	CUSTOMER DRAWING	.XXX±	.XXX* ±	APPD: Paul Huang 4/20'05	DWG NO.:			CHKD: Y.H. Mao 4/20'05	353-0000-006			DR: Xue-qing Zhang 4/20'05	SCALE SHEET REV.				N/A 2/2 C	
UNITS	mm	NAME (INTENDED USE)	FOXCONN																																		
X. ±	X*. ±	DOCKING 1.27PITCH 240POS PLUG CONNECTOR	HON HAI PRECISION IND. CO.,LTD. TAIPEI, TAIWAN, R.O.C.																																		
.X ± 0.30	.X* ±	PART NO. (INTENDED USE)	TITLE:																																		
.XX ± 0.25	.XX* ±	QL10603-B103(-4F)	CUSTOMER DRAWING																																		
.XXX±	.XXX* ±	APPD: Paul Huang 4/20'05	DWG NO.:																																		
		CHKD: Y.H. Mao 4/20'05	353-0000-006																																		
		DR: Xue-qing Zhang 4/20'05	SCALE SHEET REV.																																		
			N/A 2/2 C																																		
<p>THESE DRAWINGS AND SPECIFICATIONS ARE THE PROPERTY OF HON HAI PRECISION IND. CO., LTD. AND SHALL NOT BE REPRODUCED COPIED OR USED IN ANY MANNER WITHOUT THE PRIOR WRITTEN CONSENT OF HON HAI PRECISION IND. CO., LTD.</p>																																					