

SPECIFICATIONS

F WITH SHIELDING RF CONN.

Mechanical

Withdrawal force: 200 gf

Durability: 500 Cycles

Electrical

Dielectric Withstanding Volatage: 750 V min.

Center Resistance: 10MΩ min.

Outer Resistance: 5 MΩ max.

Physical

Body: BRASS

Insulator: PPS

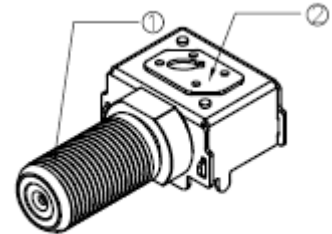
Socket: BeCu

Pin: PURE COPPER

Plating: See "ORDERING INFORMATION"

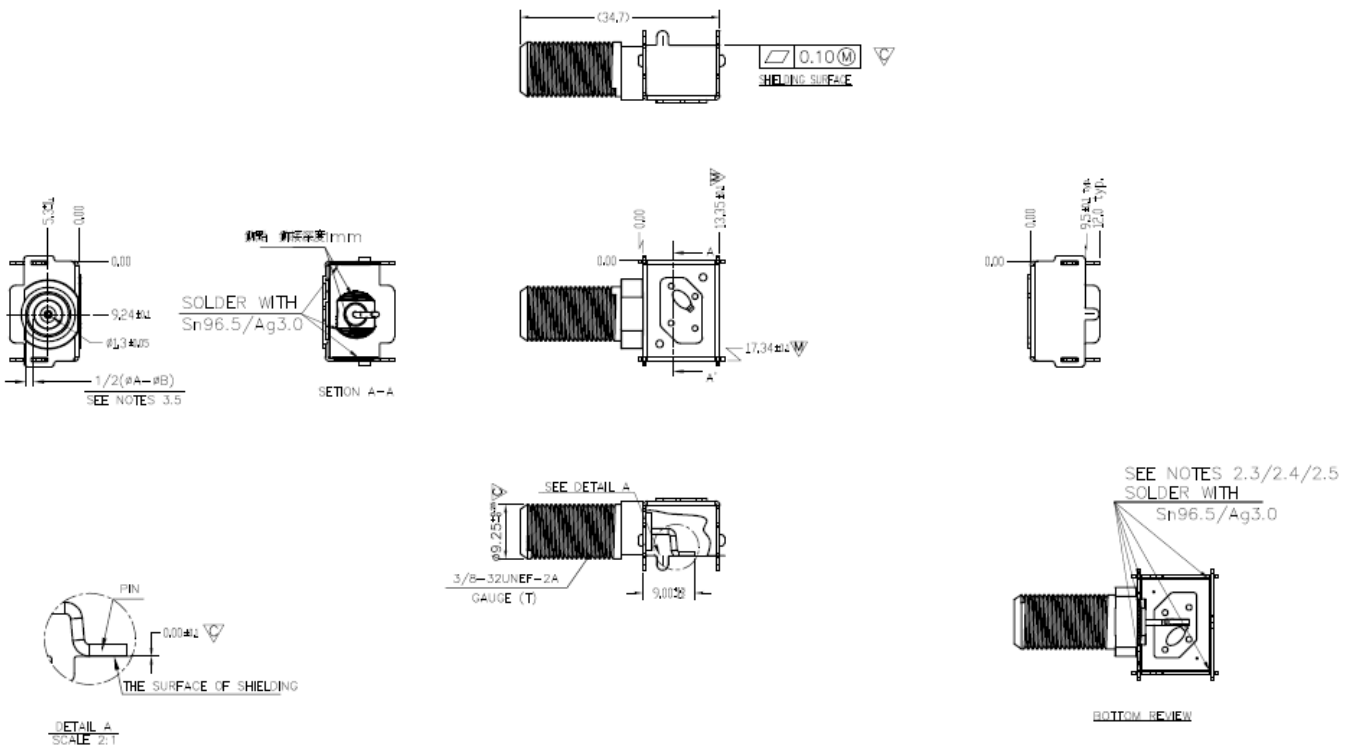
Shielding: TINPLATE

F Type R/A Jack For PCB



3D VIEW (SCALE 1/1)

DRAWING



ORDERING INFORMATION

PRODUCT NO. :	KF	A	3	2	1	0	-	N	0	0	7	-	4	F
SERIES PREFIX:														
KF=RF COAXIAL CONN.														
PROTOCOL TYPE														
A=F TYPE														
CONFIGURATION														
3=SOCKET(JACK) S/T														
ATTACHMENT														
P= PANEL BULKHEAD														
IMPEDANCE														
1=75Ω														
LEAD FREE CODE														
F= LEAD FREE														
PACKAGE														
4= SOFT TRAY														
FLOWING CODE														
BODY PLATING														
N=NICKEL PLATING														
CONTACT PLATING														
O=TIN PLATING														