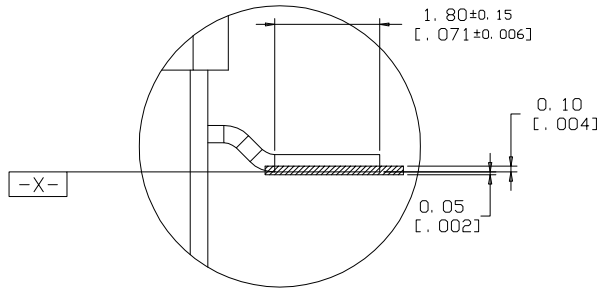
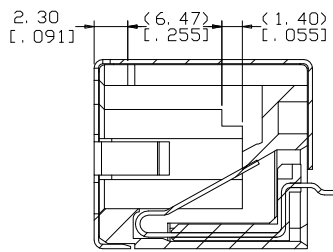
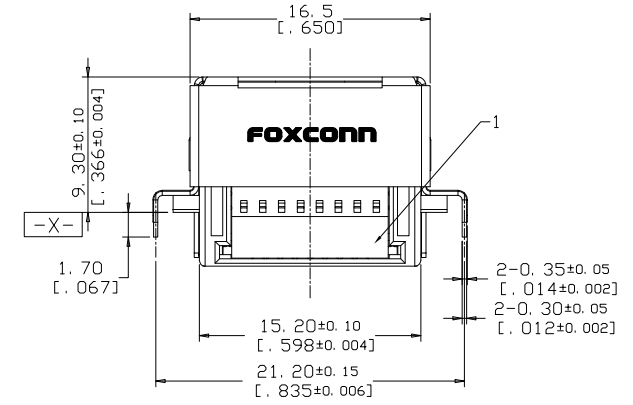
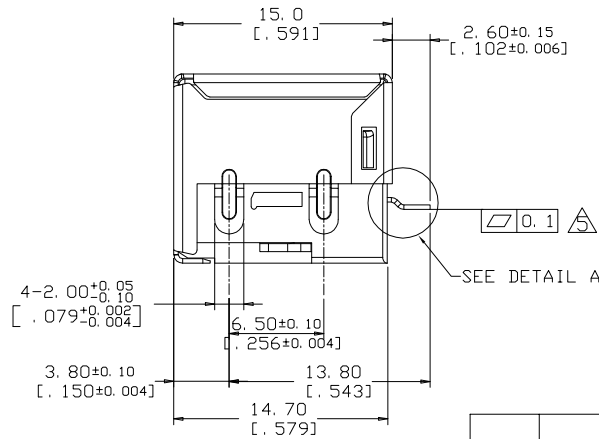
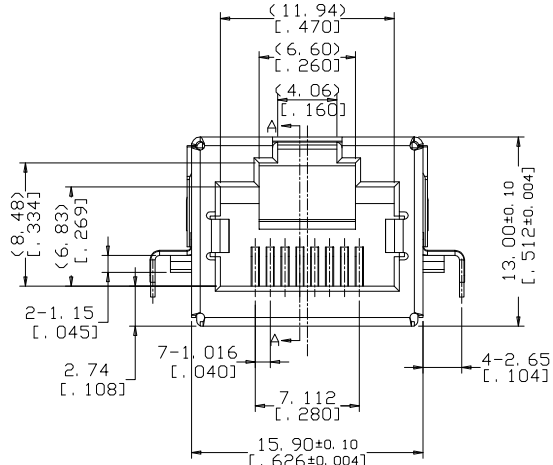
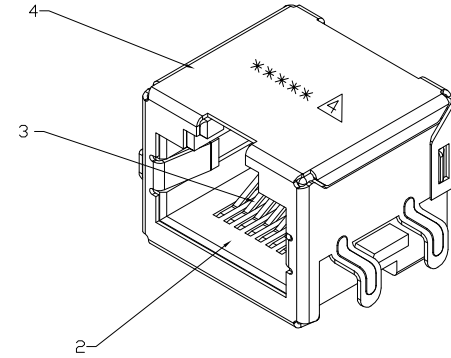
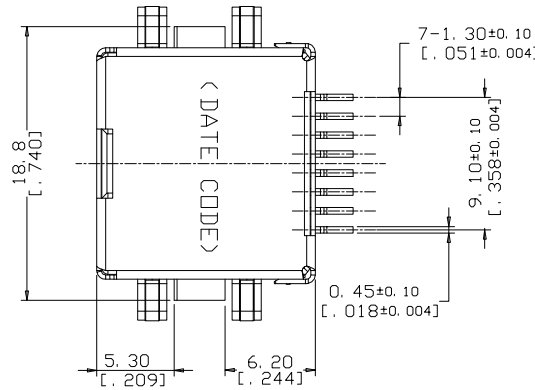


REV.	ECN. NO.	APPD.
A	BC-11-0093266	L. C. WU
B	BC-12-0002746	L. C. WU
BX1	SWR-12-0406	L. C. WU
BX2	SWR-12-0411	L. C. WU



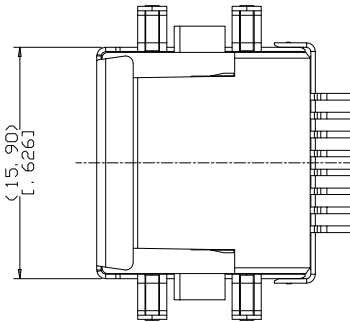
SEE DETAIL A
SCAL 4: 1



SECTION A-A

NOTES: UNLESS OTHERWISE SPECIFIED

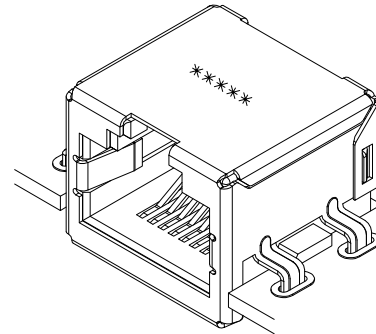
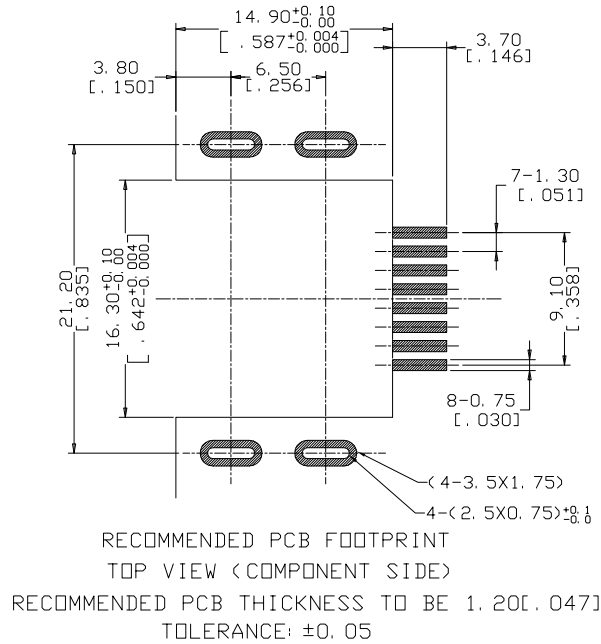
- RJ45 TO BE BASED UPON FCC 68.5.
- PCB STANDOFF SURFACE TO BE DATUM \square -X-
- HARMFUL MATERIAL CONTROL COMPLIANT ROHS.
- \triangle LASER PRINT MARK: *****
- \triangle CONTACT COPLANARITY: 0.10 MAX CONTAINS INITIAL UNDER REFLOW AND AFTER REFLOW.



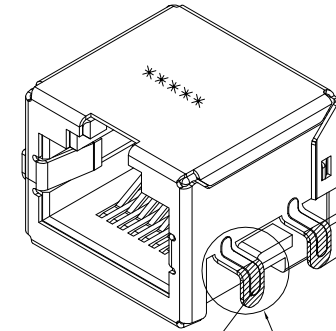
ITEM	DESCRIPTION	QTY	MATERIAL	TREATMENT
4	SHELL	1	METAL ALLOY	1.0μm MIN NICKEL UNDERPLATING 1.27μm MIN LEAD FREE TIN PLATED AT SOLDERING AREA
3	RJ45 CONTACT	8	COPPER ALLOY	GOLD AT CONTACT FUNCTION AREA \triangle 1.0μm Min. NICKEL UNDERPLATING 3.0μm Min. LEAD FREE TIN PLATED AT SOLDER TAIL
2	FRAME HOUSING	1	THERMOPLASTIC UL 94V-0 : LCP	BLACK
1	FOOTER HOUSING	1	THERMOPLASTIC UL 94V-0 : LCP	BLACK

X. ±	X°. ±	UNITS	NAME (INTENDED USE)	FOXCONN HON HAI PRECISION IND. CO., LTD. TAIPEI, TAIWAN, R.O.C.
.X ± [L. 008]	.X° ±	mm [INCH]	CUSTOMER	
.XX ± [L. 008]	.XX° ±	MAT'L	PART NO. (INTENDED USE) JM7611*-SA01-4F	TITLE: PASSIVE RJ45 1X1, R/A, SMT CONNECTOR
.XXX±	.XXX°±	FINISH	APPD: L. C. WU 04/11'12	DWG NO.: 305-0000-4754
THESE DRAWINGS AND SPECIFICATIONS ARE THE PROPERTY OF HON HAI PRECISION IND. CO., LTD. AND SHALL NOT BE REPRODUCED COPIED OR USED IN ANY MANNER WITHOUT THE PRIOR WRITTEN CONSENT OF HON HAI PRECISION IND. CO., LTD.			Q'TY	CHKD: D. K. ZHANG 04/11'12
			DR: L. Z. LI 04/11'12	SCALE SHEET REV. 1: 1 1/3 BX2

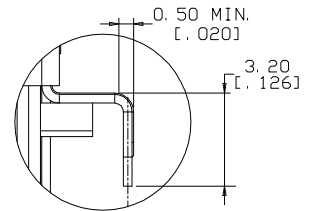
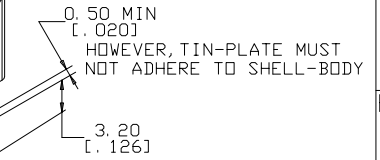
NOTES: UNLESS OTHERWISE SPECIFIED
 1. DISCOLORATION OF SHELL'S SOLDERING
 TAB IS UNQUESTIONED.



MOUNTED WITH PCB

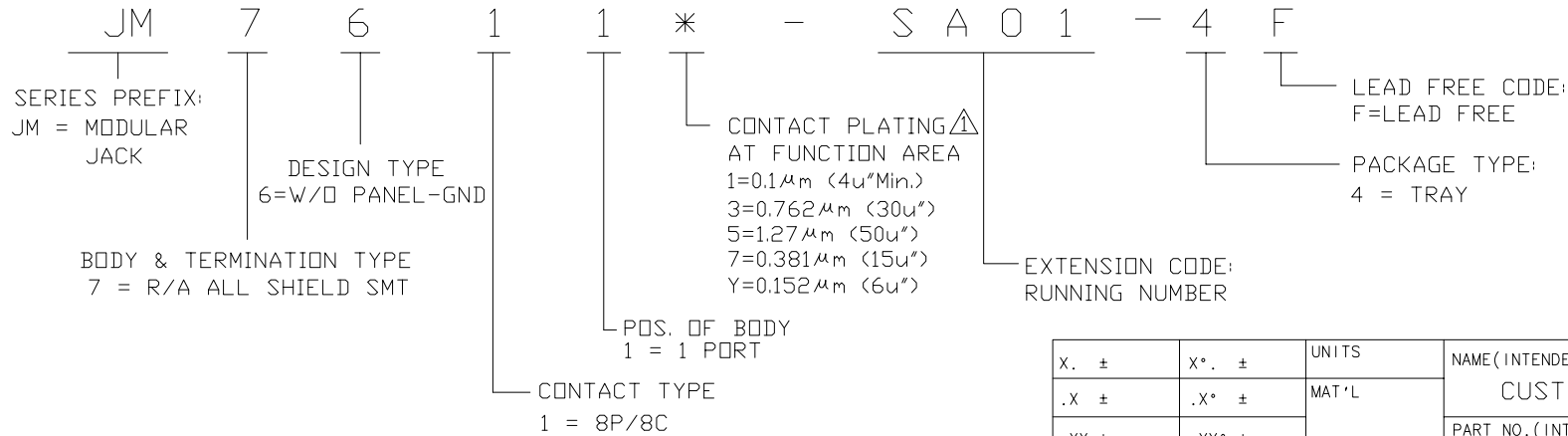


LEAD FREE TIN PLATED
(4 LEGS)



DETAIL B
 SCALE 2: 1

ORDER INFORMATION:



X. ±	X°. ±	UNITS	NAME (INTENDED USE)	FOXCONN HON HAI PRECISION IND. CO., LTD. TAIPEI, TAIWAN, R.O.C.
.X ±	.X° ±	MAT'L	CUSTOMER	
.XX ±	.XX° ±	FINISH	PART NO. (INTENDED USE)	TITLE:
.XXX ±	.XXX° ±		JM7611*-SA01-4F	APPD: L. C. WU 04/11' 12
THESE DRAWINGS AND SPECIFICATIONS ARE THE PROPERTY OF HON HAI PRECISION IND. CO., LTD. AND SHALL NOT BE REPRODUCED COPIED OR USED IN ANY MANNER WITHOUT THE PRIOR WRITTEN CONSENT OF HON HAI PRECISION IND. CO., LTD.			Q'TY	DWG NO.:
			CHKD: D. K. ZHANG 04/11' 12	305-0000-4754
			DR: L. Z. LI 04/11' 12	SCALE SHEET REV.
				N/A 2/3 BX2

SPECIFICATIONS:

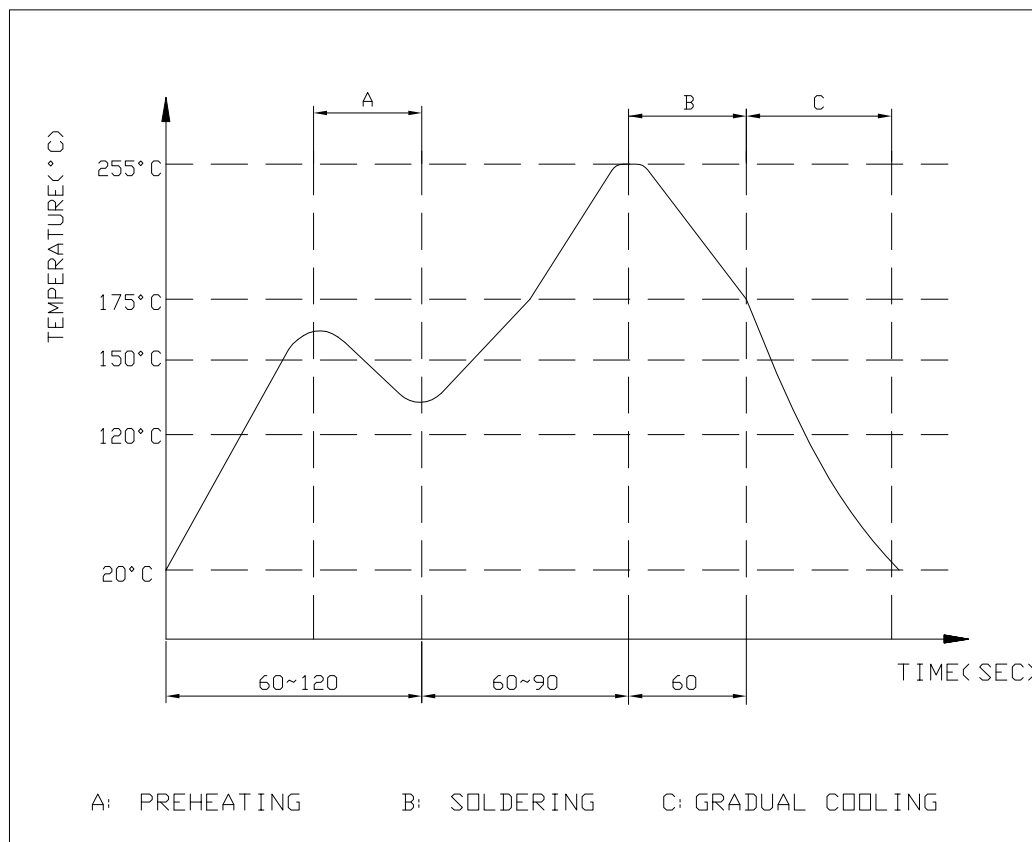
1. ELECTRICAL:

- 1.1 CURRENT RATING: 0.5 AMPERES AC.
- 1.2 VOLTAGE RATING: 120 V AC
- 1.3 INSULATION RESISTANCE: 100 MEGOHMS MINIMUM
- 1.4 DIELECTRIC WITHSTANDING VOLTAGE: 500 V AC CONTACT TO CONTACT

2. MECHANICAL:

- 2.1 MATING FORCE: 18 N MAX. WITH LATCH DEPRESSED
UNMATING FORCE: 18 N MAX. WITH LATCH DEPRESSED
AT AN ADVANTAGEDUS ANGLE.
- 2.2 DURABILITY (MATING/UNMATING): 500 CYCLES
- 2.3 OPERATING TEMPERATURE: -25°C TO 70°C

PROFILE OF IR REFLOW:



SUGGESTED IR REFLOW CURVE

- (1) TIP TEMPERATURE: 255°C Max
- (2) TIP TEMPERATURE TIME: 5±1 Second

X. ±	X°. ±	UNITS	NAME (INTENDED USE)	FOXCONN HON HAI PRECISION IND. CO.,LTD. TAIPEI, TAIWAN, R.O.C.
.X ±	.X° ±	MAT'L	CUSTOMER	
.XX ±	.XX° ±	FINISH	PART NO. (INTENDED USE)	TITLE:
.XXX±	.XXX°±		JM7611*-SA01-4F	APPD: L. C. WU 04/11' 12
THESE DRAWINGS AND SPECIFICATIONS ARE THE PROPERTY OF HON HAI PRECISION IND. CO., LTD. AND SHALL NOT BE REPRODUCED COPIED OR USED IN ANY MANNER WITHOUT THE PRIOR WRITTEN CONSENT OF HON HAI PRECISION IND. CO., LTD.			Q'TY	DWG NO.:
			CHKD: D. K. ZHANG 04/11' 12	305-0000-4754
			DR: L. Z. LI 04/11' 12	SCALE SHEET REV.
				N/A 3/3 BX2