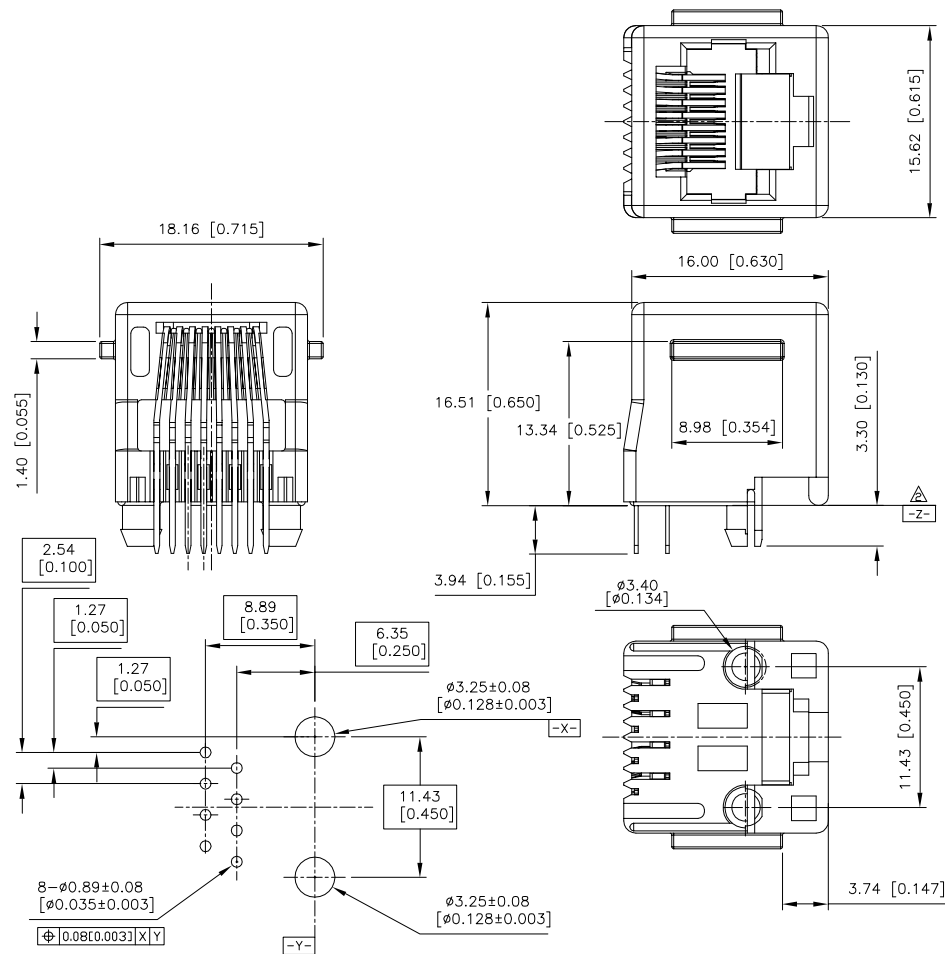


AUTOCAD CREATED DRAWING.DON'T CHANGE BY HAND.

SPECIFICATIONS:

REV.	ECN. NO.	APPD.
A	BC05739162	JOHN.CHOW
B	BC06715568	JOHN.CHOW

1. ELECTRICAL:
 - 1.1 CURRENT RATING: 1.5 AMPERES MAXIMUM
 - 1.2 VOLTAGE RATING: 150 VAC
 - 1.3 INSULATION RATING: 500 MEGOHMS MINIMUM
 - 1.4 DIELECTRIC WITHSTANDING VOLTAGE: 1000 VDC CONTACT TO CONTACT
2. MECHANICAL:
 - 2.1 MATING FORCE: 4POUNDS MAXIMUM WITH LATCH DEPRESSED AT AN ADVANTAGEOUS ANGLE
UNMATING FORCE: 4 POUNDS MAXIMUM WITH LATCH DEPRESSED AT AN ADVANTAGEOUS ANGLE
PLUG RETENTION FORCE: 10 POUNDS MINIMUM
 - 2.2 DURABILITY (MATING/UNMATING): 1000 CYCLES
 - 2.3 INSERTION FORCE OF PCB RETENTION POSTS: 15 POUNDS MAX
 - 2.4 OPERATING TEMPERATURE RANGE: 0° C TO +70° C.



JM 0 1 1 1 5 - K 0 0 * - 4F

SERIES PREFIX: JM =MODULE JACK

DESIGN TYPE: 1 = W/ STOPPER W/ PLASTIC POST

NO. OF PORT 1 = ONE PORT

CONTACT PLATING 1 = G/F, 5 = 50 u", 3 = 30 u", 7 = 15 u"

FOXCONN SERIAL NO. K001:BLACK(STAIN TIN) K003:BLACK(MATTE TIN)

4 = SOFT TRAY F =LEAD FREE

POST TYPE 1 = 8P8C

BODY & TERMINATION 0 = S/T ALL PLASTIC T/H

3	SPACER	1	THERMOPLASTIC UL 94V-0	MOLDED BLACK	
2	CONTACT	8	PHOSPHOR BRONZE	50u"MIN NICKEL PLATED OVERALL, 50u"MIN LEAD FREE TIN PLATED AT SOLDER TAIL GOLD PLATED AT CONTACT AREA (SEE ORDER INFORMATION)	
1	HOUSING	1	THERMOPLASTIC UL 94V-0	MOLDED BLACK	

RECOMMENDED PCB LAYOUT
PCB THICKNESS: 1.57mm[0.062"] MAX.

NOTES: UNLESS OTHERWISE SPECIFIED

1. CONNECTOR TO COMPLY WITH CFR TELECOMMUNICATION STANDARD PART 68 SUBPART F.
- △ PC BOARD SURFACE(STAND OFF) PLANE (DATUM \square).
3. RECOMMENDED SOLDERING PROCESS: WAVE SOLDER, PEAK TEMPERATURE 260°C, FOR 10 SECOND MAX.

X.±		X°±	2*	UNITS mm [INCH]	NAME(INTENDED USE)	FOXCONN HON HAI PRECISION IND. CO.,LTD. TAIPEI, TAIWAN, R.O.C.
.X± 0.35[0.014]		.X°±	1*			
.XX± 0.25[0.010]		.XX±		FINISH	PART NO.(INTENDED USE)	TITLE:
.XXX±		.XXX±			JM01115-K00*-4F	MODUJACK 8P W/ PANEL STOPS
THESE DRAWINGS AND SPECIFICATIONS ARE THE PROPERTY OF HON HAI PRECISION IND. CO., LTD. AND SHALL NOT BE REPRODUCED, COPIED OR USED IN ANY MANNER WITHOUT THE PRIOR WRITTEN CONSENT OF HON HAI PRECISION IND. CO., LTD.				Q'TY	APPD: JOHN CHOW 03/28'06	DWG NO.:
				CHKD: Q.WAN 03/28'06	305-0000-1635	
				DR: D.K.LIU 03/28'06	SCALE	SHEET
					1:1	1/1
					REV.	B