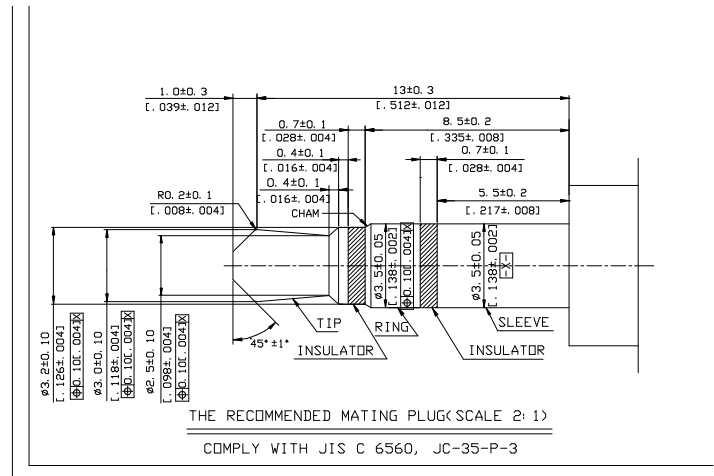
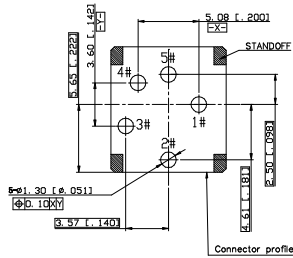
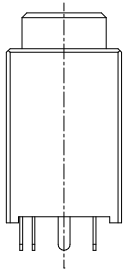


CIRCUIT SCHEMATIC



THE RECOMMENDED MATING PLUG (SCALE 2:1)
COMPLY WITH JIS C 6560, JC-35-P-3



RECOMMENDED PCB LAYOUT (COMPONENT SIDE VIEW)
DEFAULT TOLERANCE ±0.05 (±.002)
RECOMMENDED PCB'S THICKNESS : 1.57±0.05 (f. 062±.002)

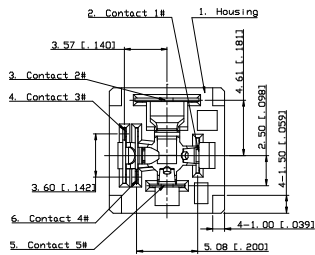
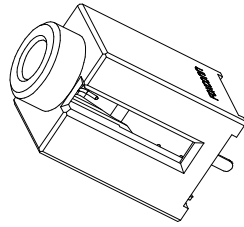


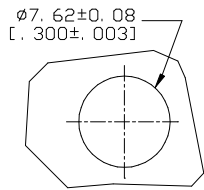
TABLE 1

PART NO.	COLOR
JA0333L-M112-4F	PINK
JA0333L-M142-4F	LIME
JA0333L-M132-4F	LIGHT BLUE
JA0333L-M102-4F	BLACK

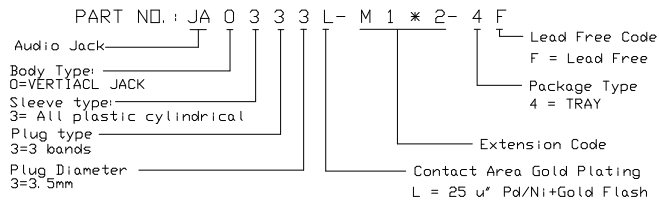
SPECIFICATION:

- ELECTRICAL CHARACTERISTICS:
 - CURRENT RATING: 1 AMPERE PER CONTACT.
 - DIELECTRIC WITHSTANDING VOLTAGE: 500VAC.
 - INSULATION RESISTANCE: 100MEGΩMS MIN.
 - CONTACT RESISTANCE: 50 MILLIOHMS MAX (INITIAL), 100 MILLIOHMS MAX. (AFTER LIFE TEST)
- MECHANICAL CHARACTERISTICS:
 - MATING AND UNMATING FORCE: 0.4~3.0Kgf (INITIAL), 0.3~3.0Kgf (AFTER LIFE TEST).
 - DURABILITY: 1500 CYCLES.
- ENVIRONMENTAL CHARACTERISTICS:
 - STORAGE TEMPERATURE : -40°C TO +85°C
OPERATION TEMPERATURE : -20°C TO +70°C
 - RoHS COMPLIANT
- RECOMMEND SOLDER PROCESS: SEE SHEET 2/2

REMARK:



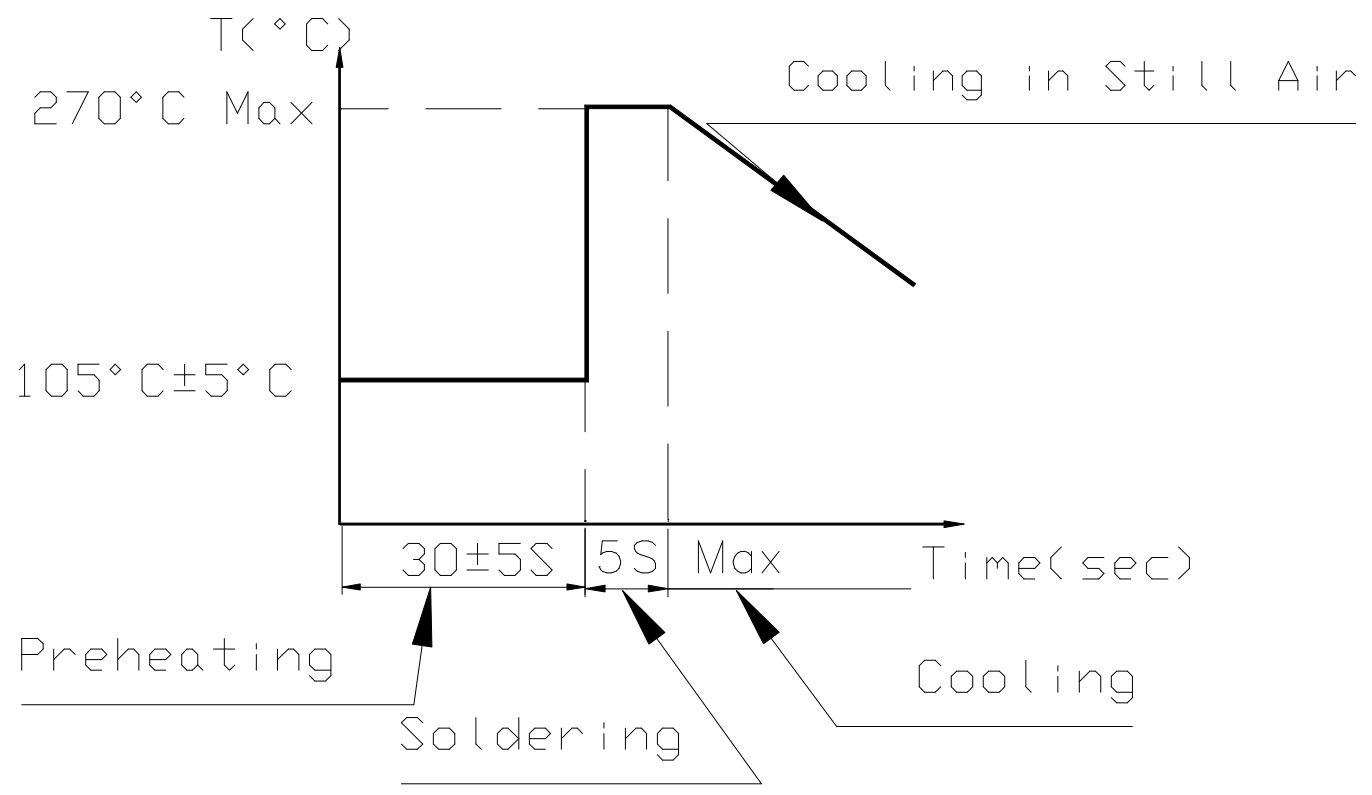
RECOMMENDED PANEL CUTOUT



ITEM	DESCRIPTION	Q'TY	MATERIAL	FINISH	REMARK						
⑤	CONTACT #4	1	COPPER ALLOY (INSERT MOLDING PART THERMOPLASTIC UL 94V-0 BLACK)	NICKEL UNDERPLATING GOLD PLATING AT CONTACT AREA TIN PLATING AT TAIL							
⑤	CONTACT #5	1									
④	CONTACT #3	1	COPPER ALLOY	NICKEL UNDERPLATING GOLD PLATING AT CONTACT AREA TIN PLATING AT TAIL							
③	CONTACT #2	1									
②	CONTACT #1	1									
①	HOUSING	1	THERMOPLASTIC UL 94V-0	SEE TABLE 1							
X.±		X.°±	UNITS mm [Inch]	NAME (INTENDED USE) CUSTOMER	FOXCONN HON HAI PRECISION IND. CO.,LTD. TAIPEI, TAIWAN, R.O.C.						
.X± 0.3(.012)		.X°±	MAT'L N/A	PART NO.(INTENDED USE) JA0333L-M1*2-4F							
.XX± 0.25(.010)		.XX°±	FINISH N/A	APPD: Corel Zhu 7/8' 06	TITLE: 03.50 SINGLE AUDIO JACK						
.XXX±		.XXX°±	Q'TY N/A	CHKD: Sean Han 7/8' 06	DWG NO.: 305-0000-1451						
THESE DRAWINGS AND SPECIFICATIONS ARE THE PROPERTY OF HON HAI PRECISION IND. CO., LTD. AND SHALL NOT BE REPRODUCED, COPIED OR USED IN ANY MANNER WITHOUT THE PRIOR WRITTEN CONSENT OF HON HAI PRECISION IND. CO., LTD.				DR: L. q. YAO 7/8' 06	<table border="1"> <tr> <th>SCALE</th> <th>SHEET</th> <th>REV.</th> </tr> <tr> <td>1:1</td> <td>1/2</td> <td>A</td> </tr> </table>	SCALE	SHEET	REV.	1:1	1/2	A
SCALE	SHEET	REV.									
1:1	1/2	A									

REV.	ECN. NO.	APPD.

SEE SHEET 1/2



WAVE SOLDERING THERMAL PROFILE

X.±	X°.±	UNITS	NAME(INTENDED USE)	FOXCONN HON HAI PRECISION IND. CO.,LTD. TAIPEI, TAIWAN, R.O.C.						
.X±	.X°.±	MAT'L	CUSTOMER							
.XX±	.XX°.±	FINISH	PART NO.(INTENDED USE)	TITLE:						
.XXX±	.XXX°.±		JAO333L-M1*2-4F	APPD: Corel Zhu 7/8' 06	ø3.50 SINGLE AUDIO JACK					
THESE DRAWINGS AND SPECIFICATIONS ARE THE PROPERTY OF HON HAI PRECISION IND. CO., LTD. AND SHALL NOT BE REPRODUCED, COPIED OR USED IN ANY MANNER WITHOUT THE PRIOR WRITTEN CONSENT OF HON HAI PRECISION IND. CO., LTD.			Q'TY	DWG NO.:						
			CHKD: Sean Hon 7/8' 06	305-0000-1451						
			DR: L. Q. YAO 7/8' 06	<table border="1"> <tr> <td>SCALE</td> <td>SHEET</td> <td>REV.</td> </tr> <tr> <td>1:1</td> <td>2/2</td> <td>A</td> </tr> </table>	SCALE	SHEET	REV.	1:1	2/2	A
SCALE	SHEET	REV.								
1:1	2/2	A								