

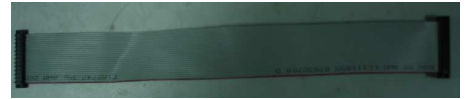
SPECIFICATIONS

Flat Cable

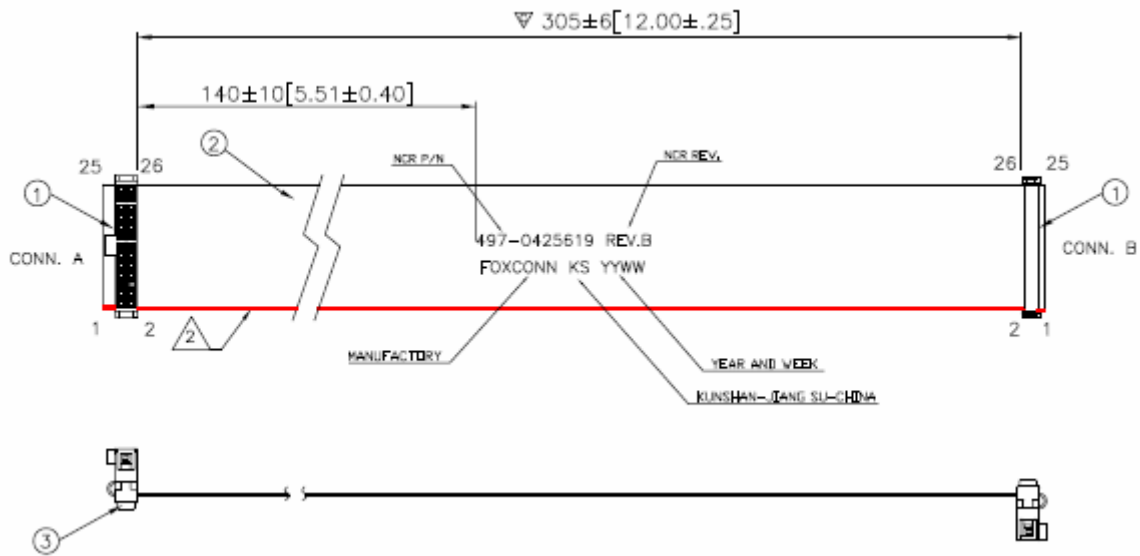
Constituent
Flat Cable +CONNECTOR+Strain Relief

26Pin To 26Pin

Electrical
Insulation Resistance: 5MΩ
Contact Resistance: 50mΩ
Operate Temperature: -30° C ~ 80° C
HEAT RESISTANCE: 105° C MAX 15 SECOND



DRAWING



ORDERING INFORMATION

PRODUCT NO.:

PART NO: FC26000-04-DF

