

SPECIFICATIONS

Mechanical

Contact Retention Force: 1.0kgf min.
Mating force: 340gf max. per contact pair
Unmating force: 15gf min. per contact pair
Durability: 500 Cycles

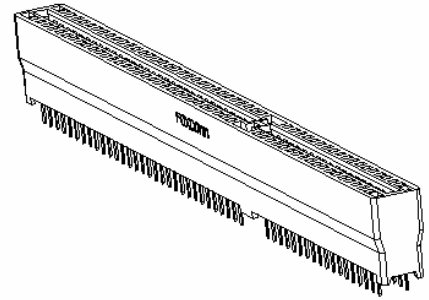
ES Series
Vertical Type
2.54mm [.100"] Pitch
98 Pos.

Electrical

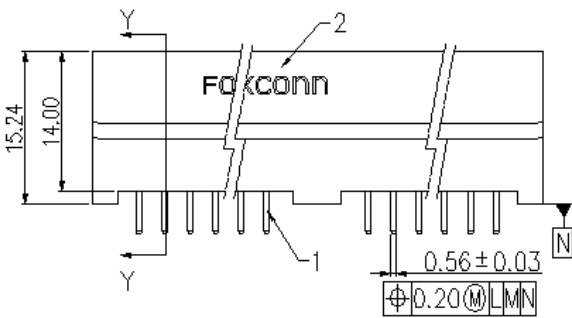
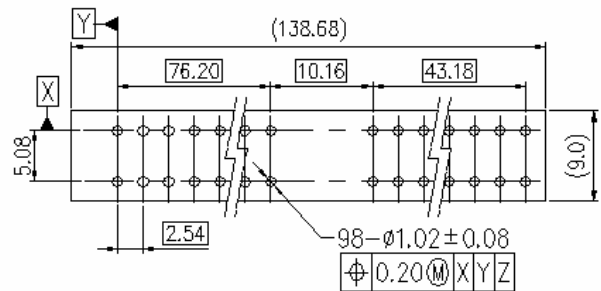
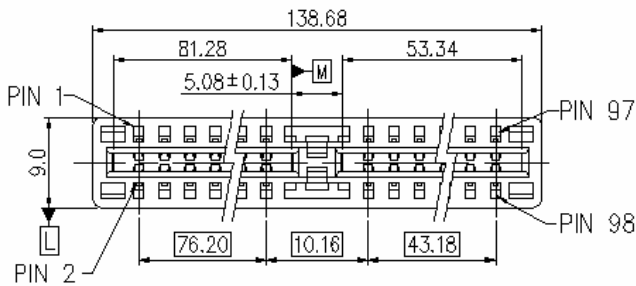
Current Rating: 3A max.
Current Voltage: 250V
Contact Resistance: 15mW max. initial
Dielectric Withstanding Voltage: 1000V
Insulation Resistance: 5000MW min.

Physical

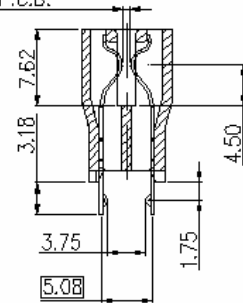
Housing: Thermoplastic, UL 94V-0 rated, in Black Color
Contact: Copper alloy
Plating: See "ORDERING INFORMATION"
Operating Temperature: -55 to +85



DRAWING



ACCEPT 1.57±0.20mm THICKNESS P.C.B.



ORDERING INFORMATION

PRDUCT NO: **E S O 49 0 * - DF**

SERIES PREFIX : E S O 49 0 *
 2.54 PITCH
 EDGE CARD CONN.
 TERMINATION TYPE : O : STRAIGHT TYPE.
 NO. OF POS.: 49 : 98 POS.
 TAIL LENGTH TYPE: O : 3.18

PLATING TYPE
 DF: LEAD FREE

CONTACT AREA PLATING
 1: GOLD FLASH.
 3: 30u" GOLD.
 6: 10u" GOLD.
 7: 15u" GOLD.

ES0490*-DF	3-6,47-50,55-58,93-96
P/N	KINK POS.