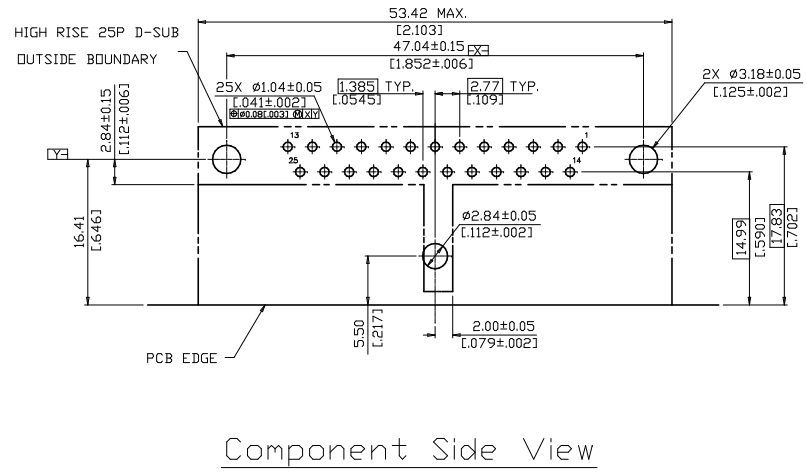
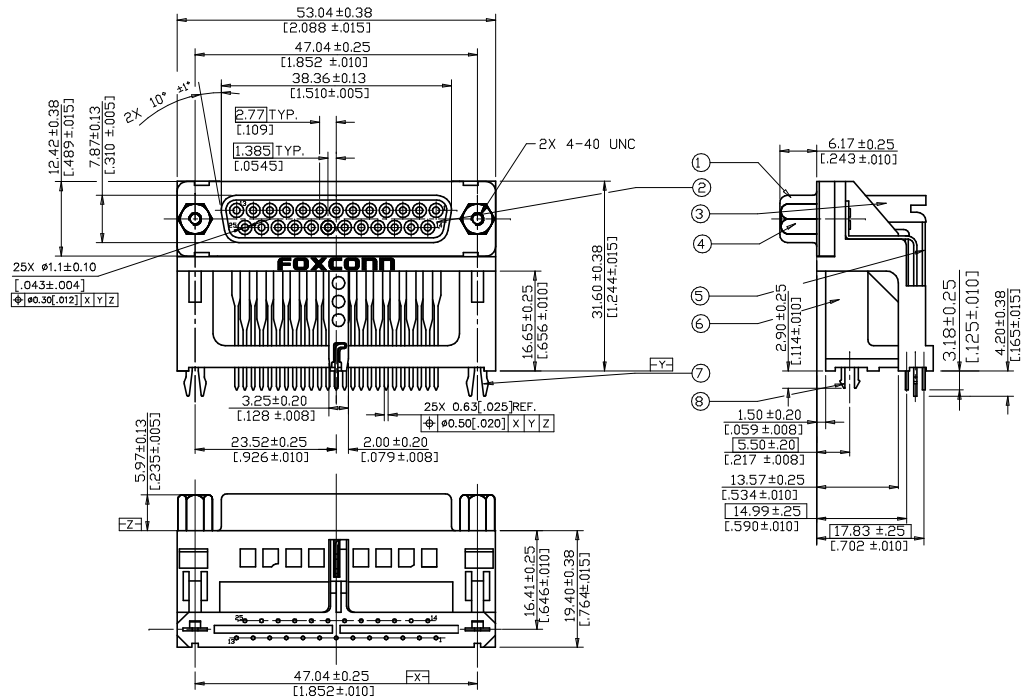
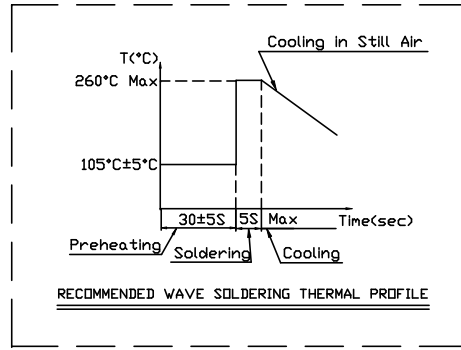


REV.	ECN NO.	APPD.
A	BC-10-0058390	Corel
B	BC-11-0118890	Corel



DM1135* -H2Q3-4F
LEAD FREE
EXTEND CODE
CONTACT GOLD PLATING THICKNESS
1=GOLD FLASH
6=10"

- NOTE:
- RECOMMENDED PCB THICKNESS: 1.57±0.08[.062±0.03]
 - SPECIFICATIONS:
 - ELECTRICAL CHARACTERISTICS:
 - CONTACT CURRENT RATING: 2 A.
 - CONTACT RESISTANCE: 35 mΩ (MAX).
 - DIELECTRICAL WITHSTANDING VOLTAGE: 750 VAC RMS 60 SEC. AT SEA LEVEL
 - INSULATION RESISTANCE: 1000 MΩ (MIN.)
 - MECHANICAL CHARACTERISTICS:
 - CONTACT INSERTION FORCE: 0.340 KgF (MAX.)
 - CONTACT EXTRACTION FORCE: 0.021 KgF (MIN.)
 - CONTACT RETENTION FORCE: 1.00 KgF (MIN.)
 - OPERATING TEMPERATURE: -55°C TO +85°C.
 - DURABILITY: 500 CYCLES.
 - FOXNUT IS AN INTEGRAL PART THAT COULDN'T BE SCREWED OFF.
 - ROHS COMPLIANT



ITEM	DESC.	Q'TY	MATERIAL	TREATMENT	REMARK
8	BOARD LOCK-FRONT	1	STEEL	TIN PLATED	
7	GROUNDING BOARD LOCK	2	STEEL	TIN PLATED	
6	BRACKET	1	THERMOPLASTIC UL 94V-0	MOLDED BURGUNDY 235C	
5	CONTACT-FEMALE	25	COPPER ALLOY	GOLD PLATING CONTACT AREA, Sn ALLOY (LEAD FREE) AT TAIL, OVER NICKEL OVERALL.	
4	FoxNUT	2	ZINC ALLOY	NICKEL PLATED	
3	INSULATOR - FEMALE (REAR)	1	THERMOPLASTIC UL 94V-0	MOLDED BURGUNDY 235C	
2	INSULATOR - FEMALE (FRONT)	1	THERMOPLASTIC UL 94V-0	MOLDED BURGUNDY 235C	
1	METAL SHELL - FEMALE	1	STEEL	TIN PLATED	

X, ±	X°, ±	UNITS	NAME (INTENDED USE)	FOXCONN
X, ±	X°, ±	mm [INCH]	CUSTOMER DRAWING	HON HAI PRECISION IND. CO., LTD. TAIPEI, TAIWAN, R.O.C.
.XX ± [.010]	.XX ° ±	N/A	PART NO. (INTENDED USE) DM1135* -H2Q3-4F	TITLE: D-SUB 25P FEMALE HIGH RISE CONN.
.XXX ±	.XXX ° ±	FINISH N/A	APPD: Corel Zhu 10/25/11	DWG NO: 301-0000-2259
THESE DRAWINGS AND SPECIFICATIONS ARE THE PROPERTY OF HON HAI PRECISION IND. CO., LTD. AND SHALL NOT BE REPRODUCED, COPIED OR USED IN ANY MANNER WITHOUT THE PRIOR WRITTEN CONSENT OF HON HAI PRECISION IND. CO., LTD.			Q'TY N/A	CHKD: J.W Gu 10/25/11 DR: Tian guanguo 10/25/11
				SCALE: 1:1
				SHEET: 1/1
				REV. B