

SPECIFICATIONS

Mechanical

Contact Mating Force: 3.06kg (6.75Lb) max.
Contact Unmating Force: 0.19kg (0.42 Lb) min.
Durability: 500 Cycles

Electrical

Current Rating: 2A
Contact Resistance: 35mΩ (Upper); 25 mΩ (Lower)
Dielectric Withstanding Voltage: 1000V AC/1min min.
Insulation Resistance: 5000MΩ min.

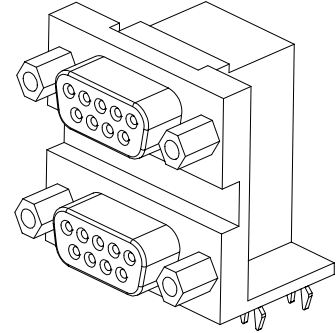
Physical

Housing: Thermoplastic, UL 94V-0 rated in Black Color
Contact: Copper alloy
Plating: See "ORDERING INFORMATION"
Operating Temperature: -55 to +105

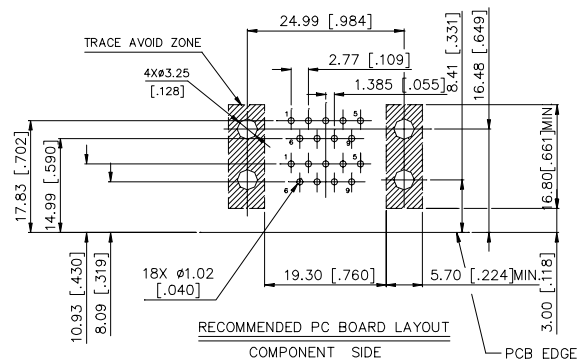
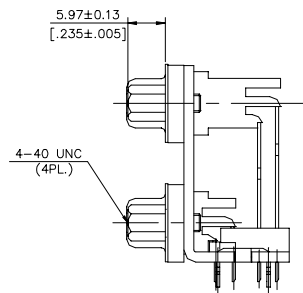
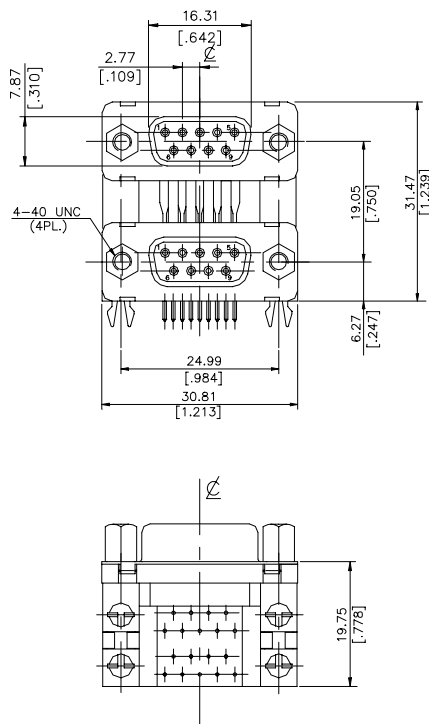
D-SUB Connector

DM Series

Right Angle Type, T/H
2.77mm [.109"] Pitch
9 Pos. (Female) +
9 Pos. (Female)



DRAWING



ORDERING INFORMATION

PRODUCT NO.: DM 1 1 1 5 * - 77 - 4F

D-SUB Series
 Termination Type
 1=Right Angle
 Contact Design Type
 1=Female
 No. of Pos.
 1=9 Pos.
 Body Length
 5=14.99

Lead Free Code
 Extension Code
 Contact Area Plating
 1=Gold Flash