

SPECIFICATIONS

Mechanical

Contact Retention Force: 0.75Lbs (0.34kgf) min. per Contact
Durability: 25 Cycles
Dram Board Insertion Force: 3 oz max. per Contact

Electrical

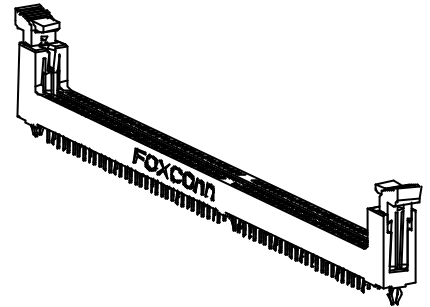
Voltage Rating: 250V AC
Current Rating: 0.5A max., 30 max., in Temperature Rise
Insulation Resistance: 1000MW min. initial
Dielectric Withstanding Voltage: 500V DC at Sea Level
Low Level Contact Resistance: 30mW max. initial

Physical

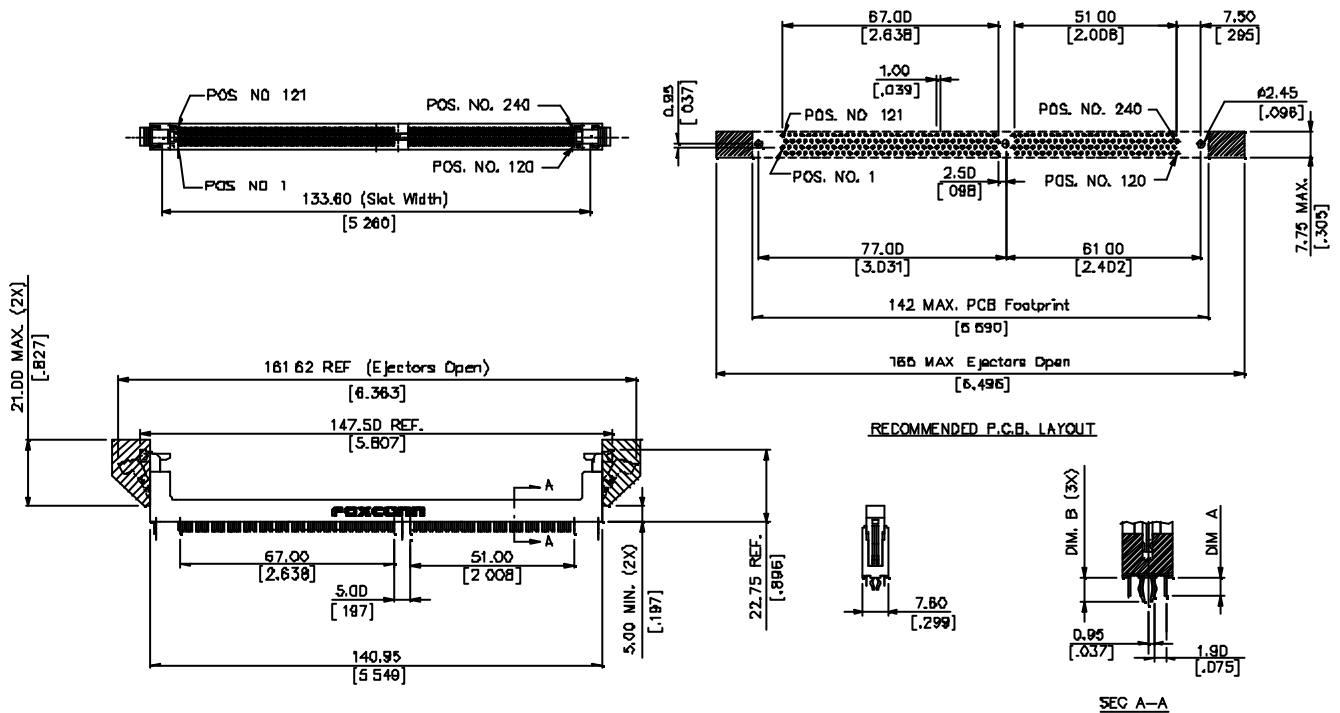
Housing: Thermoplastic, UL 94V-0 rated in Black Color
Contact: Copper alloy
Ejector: Thermoplastic, UL 94V-0 rated in Ivory or Natural Color
Metal Hold Down: Copper alloy
Operating Temperature: -55 to +105

FBD DDR II Connector

AT540 Series
Vertical Type, T/H Type
1.00mm [.039"] Pitch
240 Pos.



DRAWING



ORDERING INFORMATION

PRODUCT NO.: **A T 5 4 0 ** - H 3 B F - ****

Memory Socket ————
 Vertical ————
 FBD DDR II DIMM ————
 1.00mm Pitch ————
 No. of Pos. ————
 40=240 Pos. ————
 Tail Length ————
 0=3.15 [.124]
 1=2.67 [.105]

PLATING TYPE
 4N=TIN/LEAD
 4F=LEAD FREE

Extension Code

Contact Area Plating
 1=Gold Flash
 2=20u" Gold
 3=30u" Gold
 6=10u" Gold
 7=15u" Gold

AT5400*-H3BF-**-**	240	1.8V	3.15 [.124]	4.57 [.180]
AT5401*-H3BF-**-**		1.6V	2.67 [.105]	3.78 [.149]
P/N	POS.	VOLTAGE MARKING	DIM. A	DIM. B