

IDEAS GENERATED DRAWING, DON'T CHANGE BY HAND.

REV.	ECN. NO.	APPD.
A	BC05737271	JOHM CHOW
B	BC05742261	JOHM CHOW
C	BC-07-7026546	JOHM CHOW
D	BC-07-7035237	JOHM CHOW
E	BC-08-7071853	L.C.WU
F	BC-09-7056970	L.C.WU
FX1	PDK140184	L.C.WU

NOTES: UNLESS OTHERWISE SPECIFIED.

△ PRESS FIT HOLES:

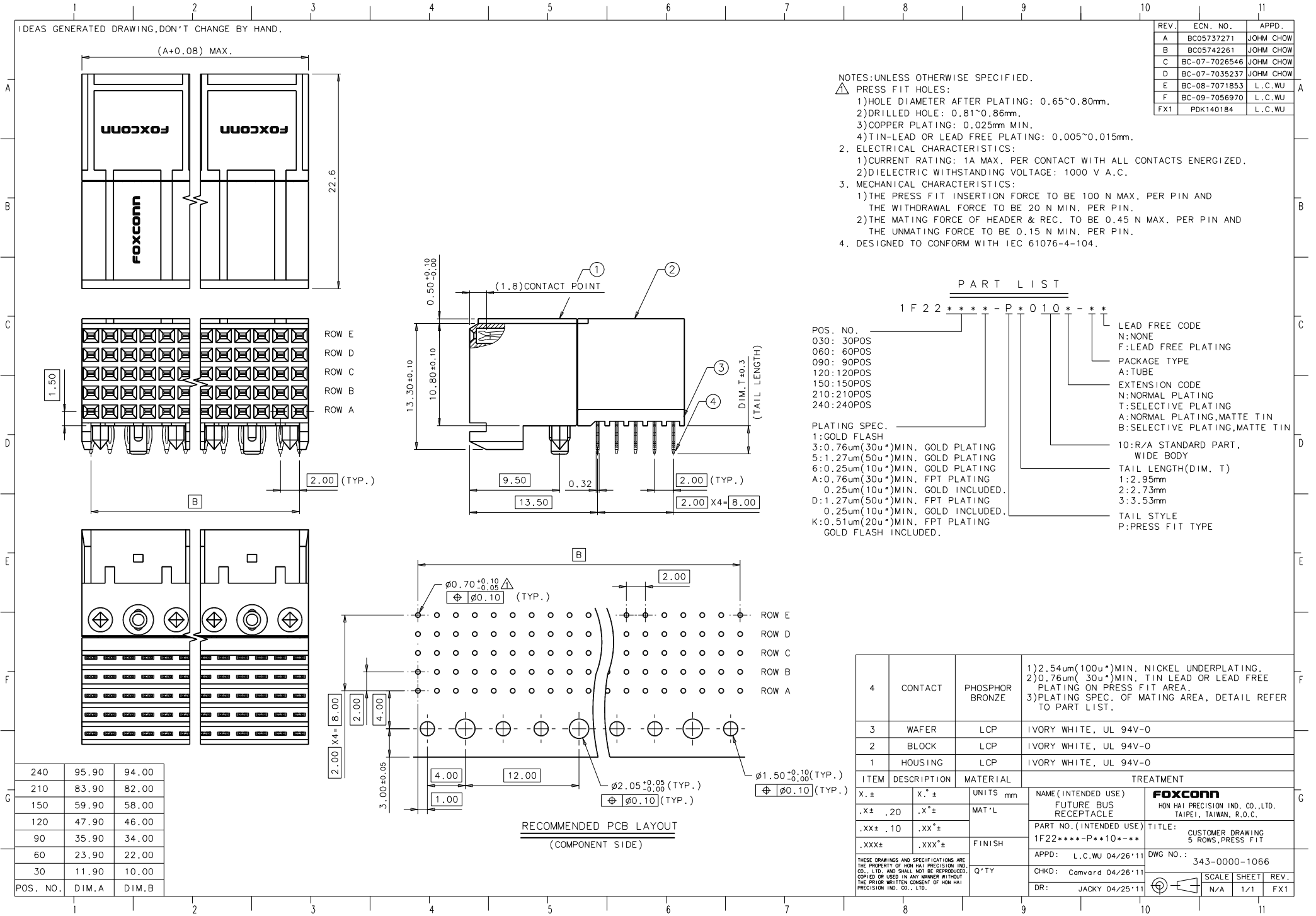
- 1) HOLE DIAMETER AFTER PLATING: 0.65~0.80mm.
- 2) DRILLED HOLE: 0.81~0.86mm.
- 3) COPPER PLATING: 0.025mm MIN.
- 4) TIN-LEAD OR LEAD FREE PLATING: 0.005~0.015mm.

2. ELECTRICAL CHARACTERISTICS:

- 1) CURRENT RATING: 1A MAX. PER CONTACT WITH ALL CONTACTS ENERGIZED.
- 2) DIELECTRIC WITHSTANDING VOLTAGE: 1000 V A.C.

3. MECHANICAL CHARACTERISTICS:

- 1) THE PRESS FIT INSERTION FORCE TO BE 100 N MAX. PER PIN AND THE WITHDRAWAL FORCE TO BE 20 N MIN. PER PIN.
- 2) THE MATING FORCE OF HEADER & REC. TO BE 0.45 N MAX. PER PIN AND THE UNMATING FORCE TO BE 0.15 N MIN. PER PIN.
4. DESIGNED TO CONFORM WITH IEC 61076-4-104.



**PART LIST**

1 F 2 2 \* \* \* \* - P \* 0 1 0 \* - \* \*

POS. NO.	DESCRIPTION	LEAD FREE CODE
030:	30POS	N: NONE
060:	60POS	F: LEAD FREE PLATING
090:	90POS	
120:	120POS	PACKAGE TYPE
150:	150POS	A: TUBE
210:	210POS	EXTENSION CODE
240:	240POS	N: NORMAL PLATING
		T: SELECTIVE PLATING
		A: NORMAL PLATING, MATTE TIN
		B: SELECTIVE PLATING, MATTE TIN
		10: R/A STANDARD PART, WIDE BODY
		TAIL LENGTH (DIM. T)
		1: 2.95mm
		2: 2.73mm
		3: 3.53mm
		TAIL STYLE
		P: PRESS FIT TYPE

PLATING SPEC.

1: GOLD FLASH  
 3: 0.76um(30u\*) MIN. GOLD PLATING  
 5: 1.27um(50u\*) MIN. GOLD PLATING  
 6: 0.25um(10u\*) MIN. GOLD PLATING  
 A: 0.76um(30u\*) MIN. FPT PLATING  
 0.25um(10u\*) MIN. GOLD INCLUDED.  
 D: 1.27um(50u\*) MIN. FPT PLATING  
 0.25um(10u\*) MIN. GOLD INCLUDED.  
 K: 0.51um(20u\*) MIN. FPT PLATING  
 GOLD FLASH INCLUDED.

POS. NO.	DIM. A	DIM. B
240	95.90	94.00
210	83.90	82.00
150	59.90	58.00
120	47.90	46.00
90	35.90	34.00
60	23.90	22.00
30	11.90	10.00

ITEM	DESCRIPTION	MATERIAL	TREATMENT
4	CONTACT	PHOSPHOR BRONZE	1) 2.54um(100u*) MIN. NICKEL UNDERPLATING. 2) 0.76um(30u*) MIN. TIN LEAD OR LEAD FREE PLATING ON PRESS FIT AREA. 3) PLATING SPEC. OF MATING AREA, DETAIL REFER TO PART LIST.
3	WAFER	LCP	IVORY WHITE, UL 94V-0
2	BLOCK	LCP	IVORY WHITE, UL 94V-0
1	HOUSING	LCP	IVORY WHITE, UL 94V-0

ITEM	DESCRIPTION	MATERIAL	TREATMENT
X. ±	X. ±	UNITS mm	NAME (INTENDED USE)
.X ± .20	.X ±	MAT'L	FUTURE BUS RECEPTACLE
.XX ± .10	.XX ±		PART NO. (INTENDED USE)
.XXX ±	.XXX ±	FINISH	1F22****-P**10****
		Q'TY	APPD: L.C.WU 04/26/11
			CHKD: Comvard 04/26/11
			DR: JACKY 04/25/11

TITLE: CUSTOMER DRAWING  
5 ROWS, PRESS FIT

DWG NO.: 343-0000-1066

SCALE	SHEET	REV.
N/A	1/1	FX1