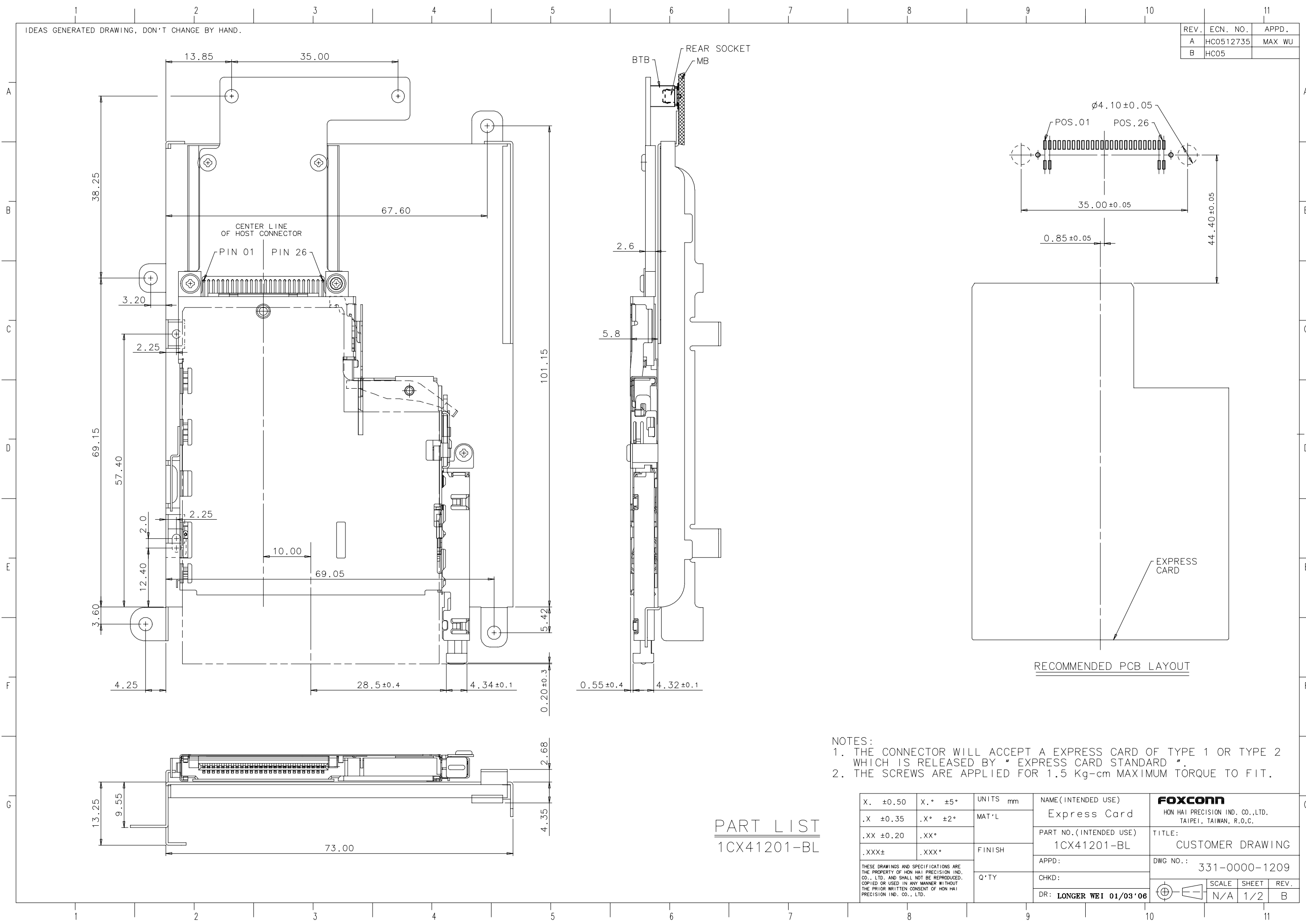


IDEAS GENERATED DRAWING, DON'T CHANGE BY HAND.

REV.	ECN. NO.	APPD.
A	HC0512735	MAX WU
B	HC05	



- NOTES:
 1. THE CONNECTOR WILL ACCEPT A EXPRESS CARD OF TYPE 1 OR TYPE 2 WHICH IS RELEASED BY " EXPRESS CARD STANDARD ".
 2. THE SCREWS ARE APPLIED FOR 1.5 Kg-cm MAXIMUM TORQUE TO FIT.

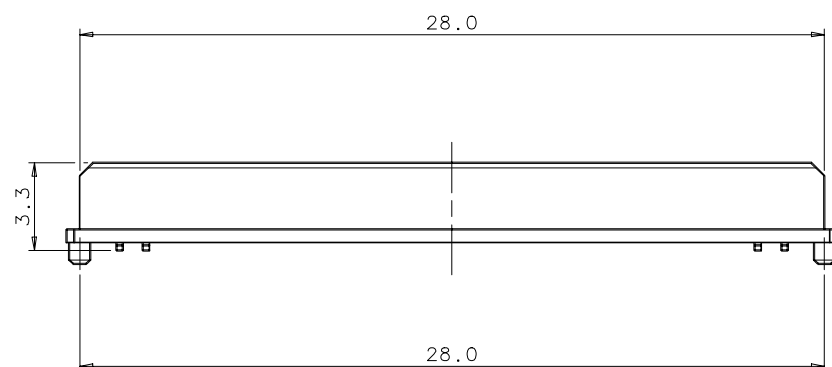
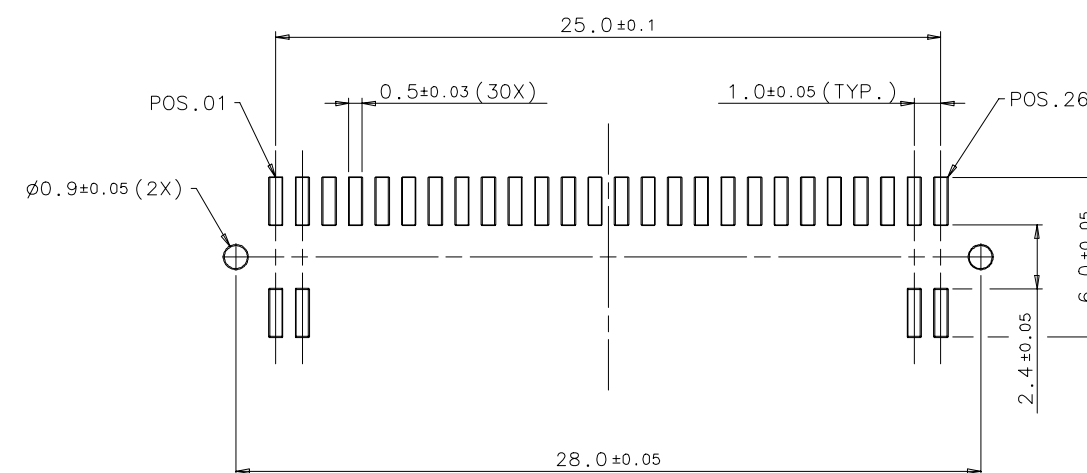
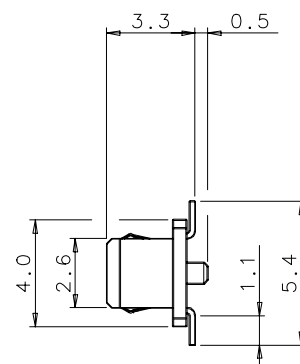
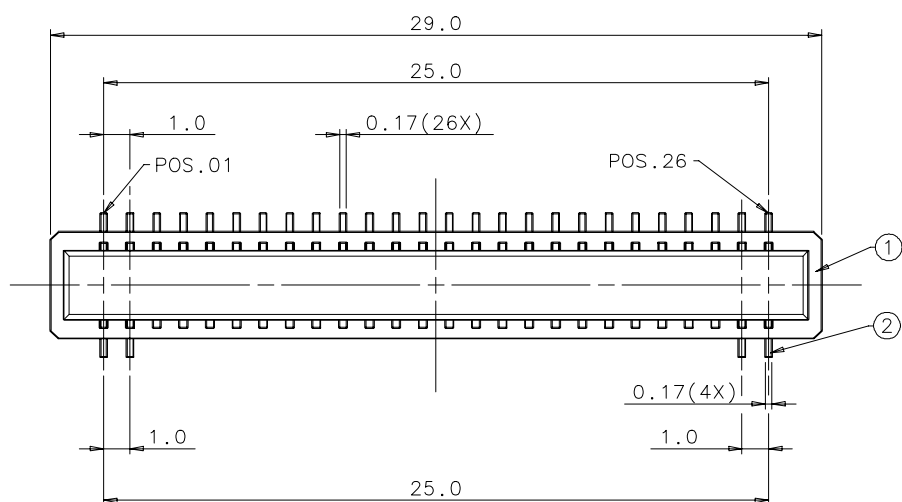
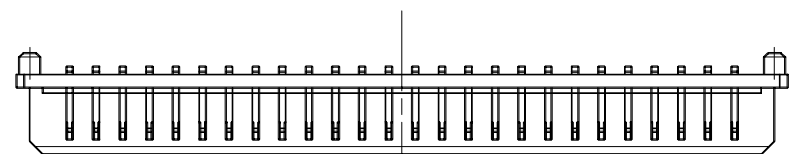
PART LIST
1CX41201-BL

X. ±0.50	X.* ±5*	UNITS mm	NAME (INTENDED USE)	FOXCONN HON HAI PRECISION IND. CO., LTD. TAIPEI, TAIWAN, R.O.C.
.X ±0.35	.X* ±2*	MAT'L	Express Card	
.XX ±0.20	.XX*	FINISH	PART NO. (INTENDED USE)	TITLE:
.XXX±	.XXX*		1CX41201-BL	CUSTOMER DRAWING
THESE DRAWINGS AND SPECIFICATIONS ARE THE PROPERTY OF HON HAI PRECISION IND. CO., LTD. AND SHALL NOT BE REPRODUCED, COPIED OR USED IN ANY MANNER WITHOUT THE PRIOR WRITTEN CONSENT OF HON HAI PRECISION IND. CO., LTD.			APPD:	DWG NO.:
			Q'TY	CHKD:
DR: LONGER WEI 01/03'06			SCALE	SHEET
			N/A	1/2
			REV.	B

NOTES:

- CONTACT FINISH: 50 μ " MIN. NICKEL UNDER PLATING OVERALL.
1-6 μ " GOLD PLATING OVERALL.
- THE SOCKET HAD BETTER USED IN THE FOLLOWING CONDITIONS:
2-1. NO MORE THAN 20 CYCLES MATING/UNMATING.

COMPONENT PARTS LIST			
ITEM	COMPONENT	Q'TY	MATERIAL
1	HOUSING	1	LCP, NATURAL
2	SOCKET PIN	30	PHOSPHOR BRONZE



PART LIST
WZ31731-FM-8 F

F: LEAD FREE

X. ±0.50	X.* ±5°	UNITS mm	NAME (INTENDED USE) 1.0mm Pitch Rear Socket	FOXCONN HON HAI PRECISION IND. CO., LTD. TAIPEI, TAIWAN, R.O.C.		
.X ±0.35	.X* ±2°	MAT'L	PART NO. (INTENDED USE) WZ31731-FM-8F			
.XX ±0.20	.XX*	FINISH	APPD:	TITLE: CUSTOMER DRAWING		
.XXX±	.XXX*		Q'TY	CHKD:	DWG NO.: 331-0000-1209	
<small>THESE DRAWINGS AND SPECIFICATIONS ARE THE PROPERTY OF HON HAI PRECISION IND. CO., LTD. AND SHALL NOT BE REPRODUCED, COPIED OR USED IN ANY MANNER WITHOUT THE PRIOR WRITTEN CONSENT OF HON HAI PRECISION IND. CO., LTD.</small>			DR: LONGER WEI 01/03'06	SCALE		
			DR: LONGER WEI 01/03'06	SHEET	REV.	
			DR: LONGER WEI 01/03'06	N/A	2/2	B