

SPECIFICATIONS

Tact Switch

Tact Switch, T/H Type

Electrical

Rating: 50mA max.
Contact Resistance: 100mΩ max.
Insulation Resistance: 100MΩ min.
Dielectric Withstanding Voltage: 250V AC for 1 Minute
Bounce: 5ms max.

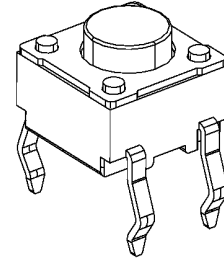
Mechanical

Operating Force & Durability: 100±30gf 1000000 Cycles
 160±50gf 1000000 Cycles
 260±80gf 100000 Cycles

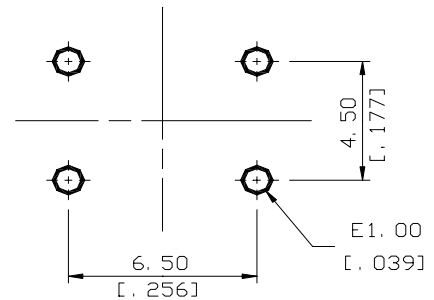
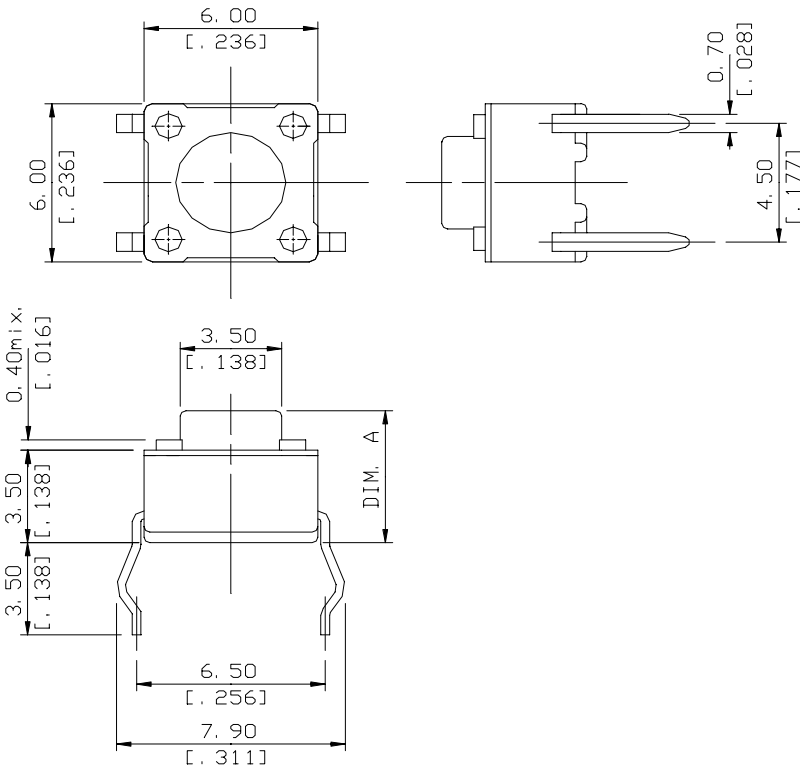
Travel: 0.25+0.2/-0.1mm
Return force: 25gf min.

Physical

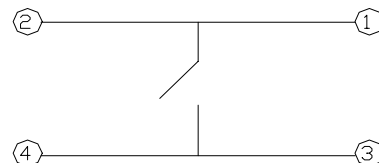
Operating Temperature: -20 to +70



DRAWING



RECOMMENDED P. C. B. LAYOUT



CIRCUIT DIAGRAM

ORDERING INFORMATION

PRODUCT NO.: 1BT003-2****-****

Switch Series ————
 Tact Type ————
 Product Series ————
 Prod. Size: 2=6.0mm*6.0mm
 Total Height ————
 5=4.3mm
 6=5.0mm
 7=7.0mm

Plating: ————
 0=Standard
 L=Lead-free

Terminal: ————
 0=L SMT
 2=T/H

Operating Force: ————
 1=100gf
 2=160gf
 3=260gf
 4=520gf

Modification Code: ————
 None=w/o Ground
 001=w/ Ground

1BT003-2512*	100±30gf	4.3
1BT003-2522*	160±50gf	4.3
1BT003-2532*	260±80gf	4.3
1BT003-2542*	520±80gf	4.3
1BT003-2612*	100±30gf	5.0
1BT003-2622*	160±50gf	5.0
1BT003-2632*	260±80gf	5.0
1BT003-2642*	520±80gf	5.0
1BT003-2712*	100±30gf	7.0
1BT003-2722*	160±50gf	7.0
1BT003-2732*	260±80gf	7.0
1BT003-2742*	520±80gf	7.0
P/N	OPERATING FORCE	DIM. A