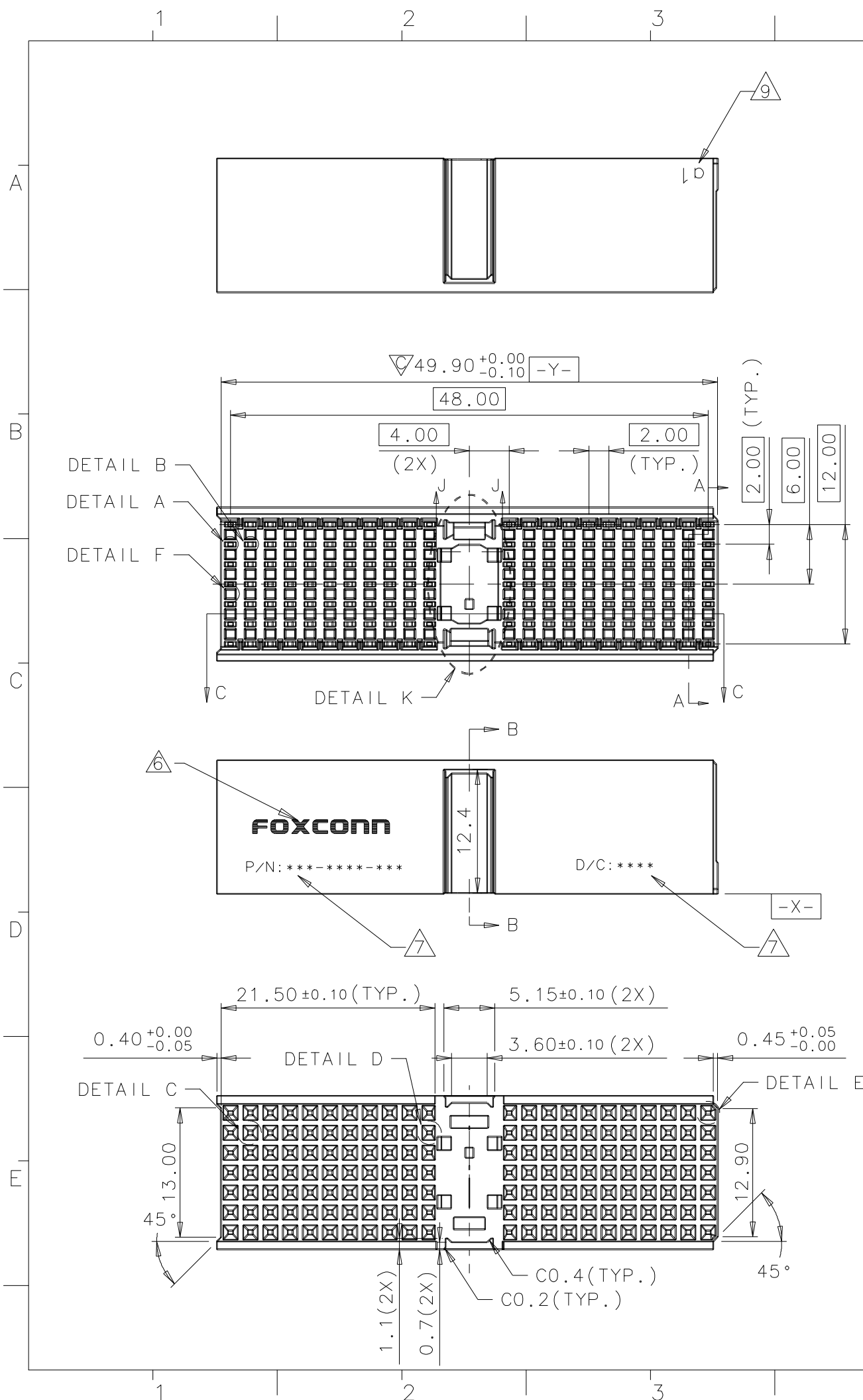
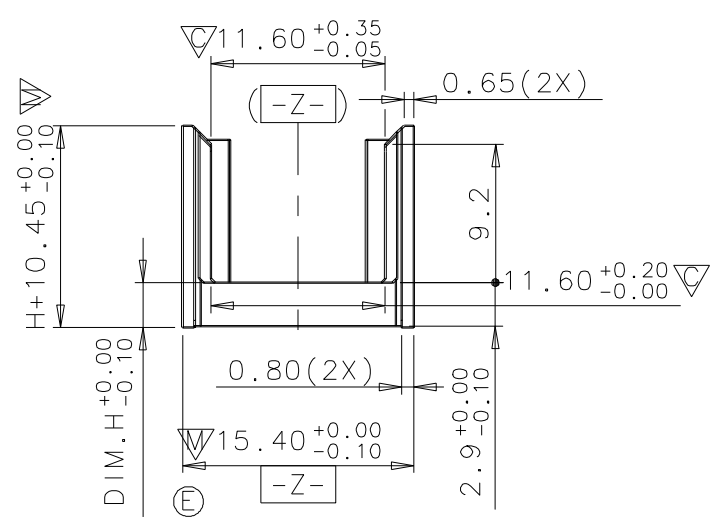


REV.	ECN. NO.	APPD.
A	HC011829	Bruce Wu
B	HC013392	Bruce Wu
C	HC033430	W C . L
D	BC-07-7083294	JOHN CHOW
E	BC-08-7016872	L.C Wu
F	BC-08-7030419	L.C Wu



- NOTES: UNLESS OTHERWISE SPECIFIED
- MATERIAL: PBT, 20%GF, UL 94V-0, COLOR: GRAY, P/N: 901-0162-003.
  - UNLESS OTHERWISE SPECIFIED, THE FOLLOWING CONDITIONS SHALL BE MET:  
 MAXIMUM ALLOWABLE FLASH: 0.1mm THICK BY 0.2mm LONG.  
 MAXIMUM ALLOWABLE MISMATCH AT PARTING LINES: 0.1mm.  
 MAXIMUM ALLOWABLE DEPTH OF EJECTION MARKS: 0.15mm.  
 MAXIMUM GATE PROTRUSION OR DEPRESSION: 0.2mm.  
 MAXIMUM ALLOWABLE DEPTH OF SINK MARKS: 0.1mm.
  - ALL DRAFT ANGLES ARE 1° MAXIMUM PER SIDE, UNLESS OTHERWISE SPECIFIED.
  - DIMENSIONS MARKED  $\nabla$  SHALL BE CHECKED BY Q.C. AND PROCESS ENGINEERS.
  - ALL CORNERS AND RADII HAVE MAXIMUM RADII OF 0.1mm UNLESS OTHERWISE SPECIFIED.
  - THE "FOXCONN" LOGO IS SPECIFIED BY THE FOXCONN ENGINEERING STANDARD DOCUMENT NO. HES-LOT1-01 A=1.4mm AND LOCATED APPROXIMATELY AS SHOWN WITH A MAX. DEPTH OF 0.02mm BELOW THE SURFACE.
  - THE PART NUMBER AND DATE CODE SPECIFIED BY THE FOXCONN ENGINEERING STANDARD DOCUMENT NO. EMB-D00-073 IS PRINTED ON THE SURFACE, AND THE HEIGHT IS 1.5mm.
  - CAVITY NUMBER WITH THE HEIGHT OF 1.5mm, THE WIDTH OF 0.8mm, AND THE DEPTH OF 0.05mm BELOW THE SURFACE. WHERE N=1,2,3,4
  - THE "a1" LOGO, TEXT HEIGHT IS 2.0+/-0.2mm, AND LOCATED APPROXIMATELY AS SHOWN WITH DEPTH OF 0.20+/-0.05mm BELOW THE SURFACE.
  - HARMFUL MATERIAL CONTROL PLEASE FOLLOW DOC. NO. "EPI12".



**PART LIST**

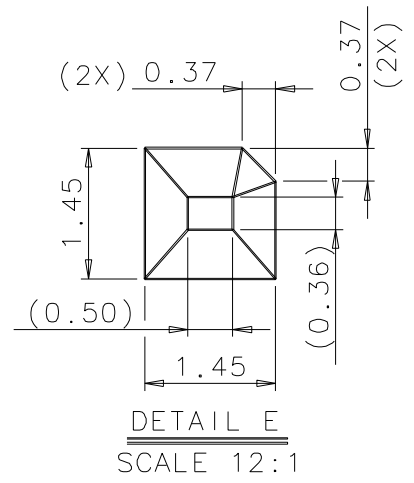
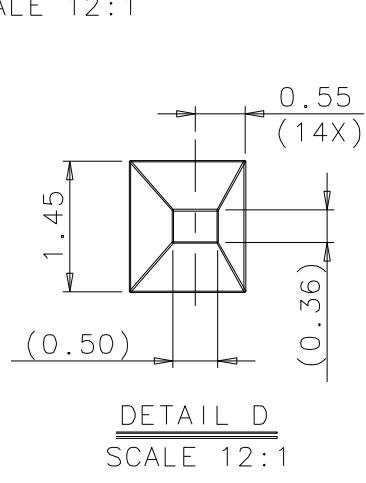
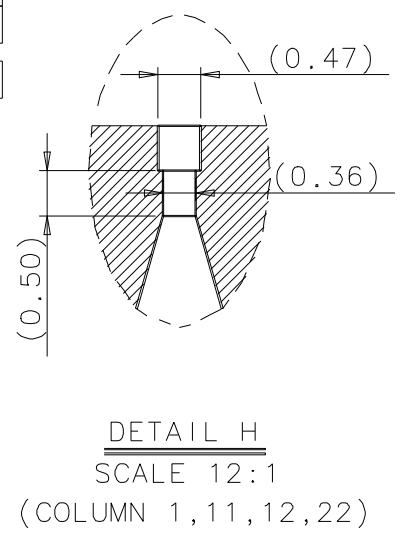
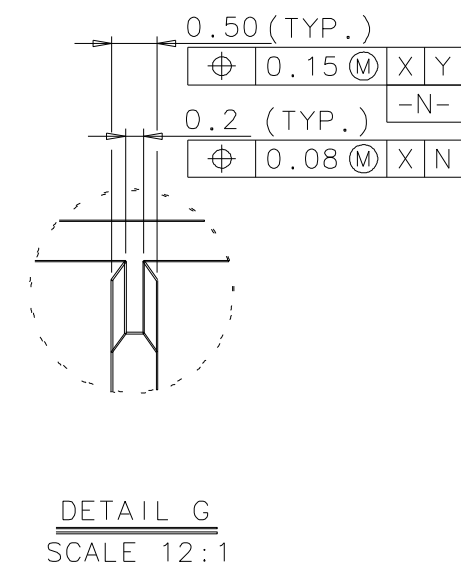
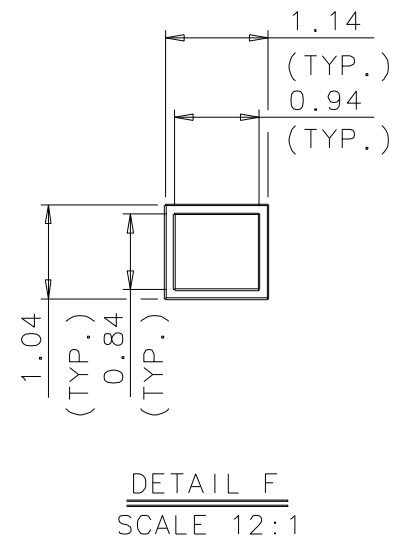
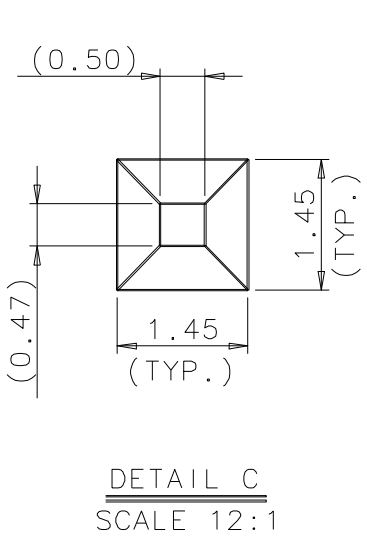
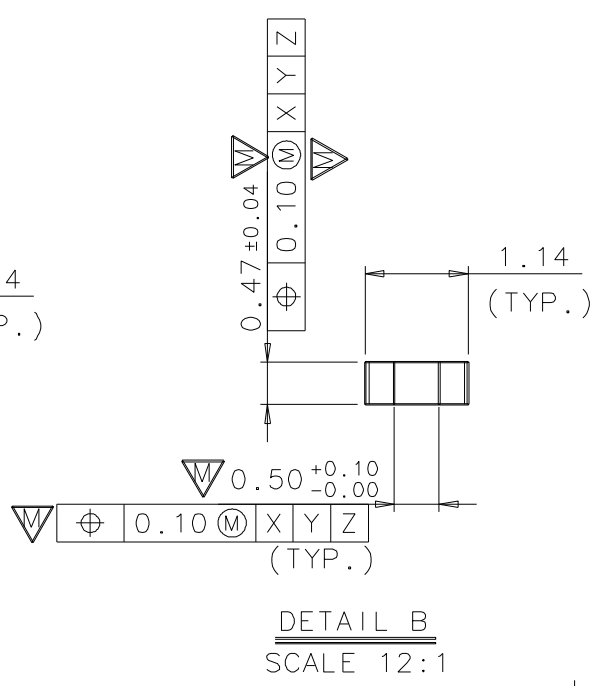
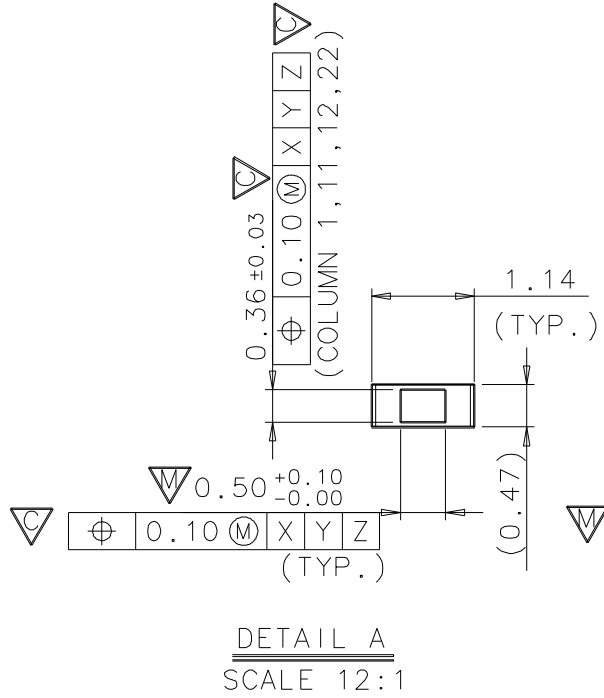
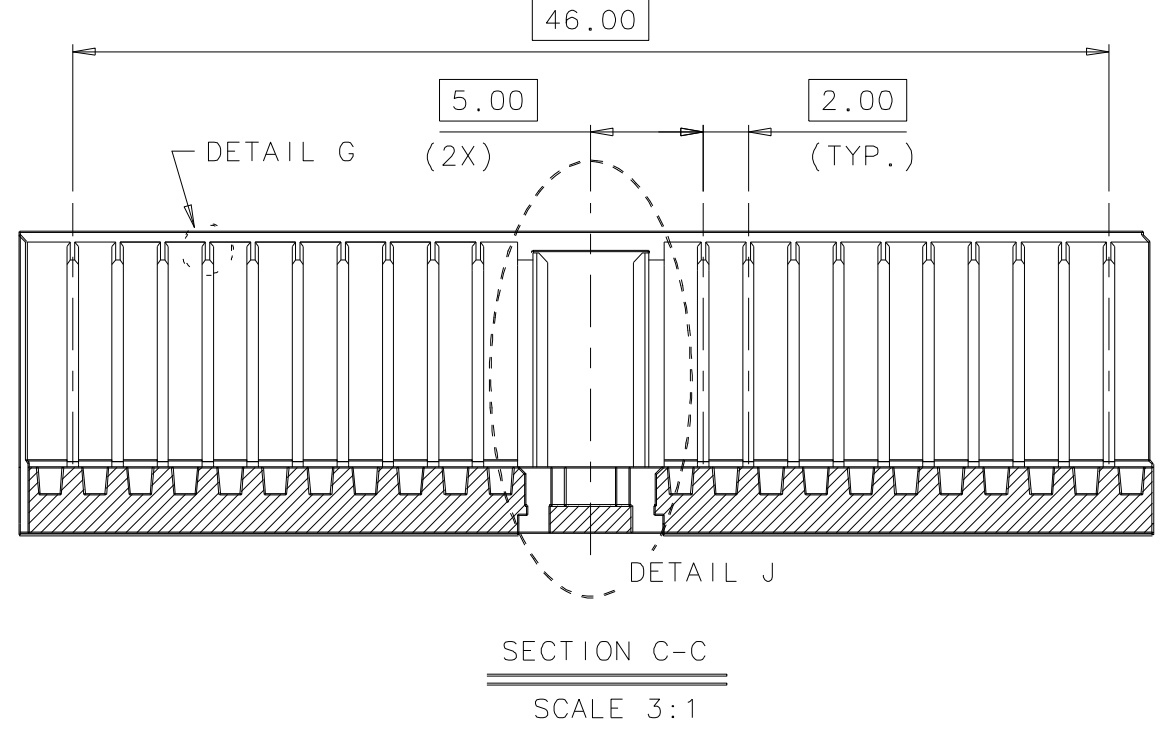
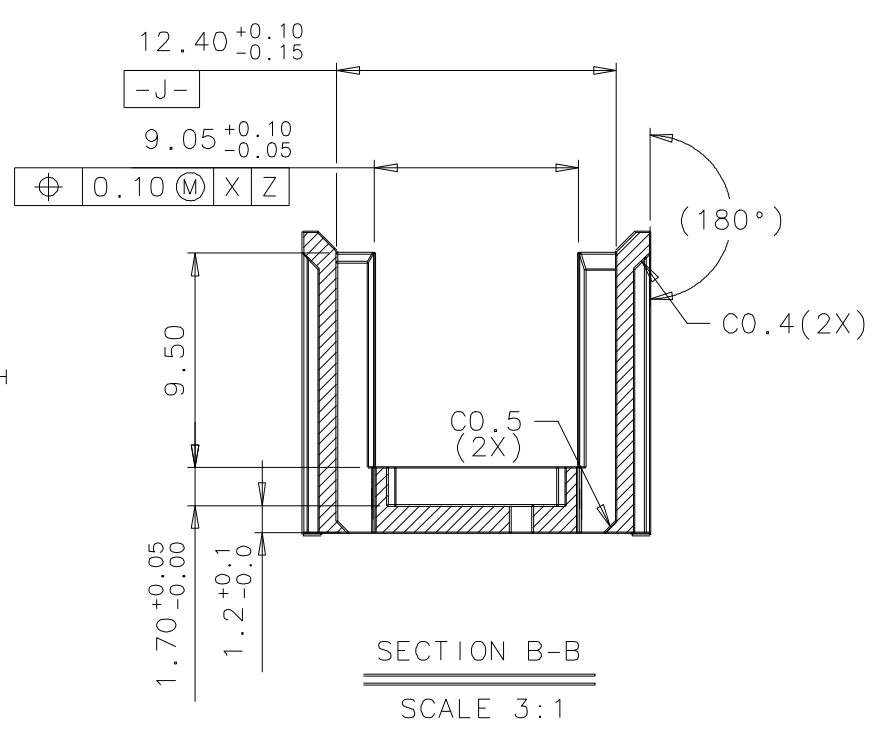
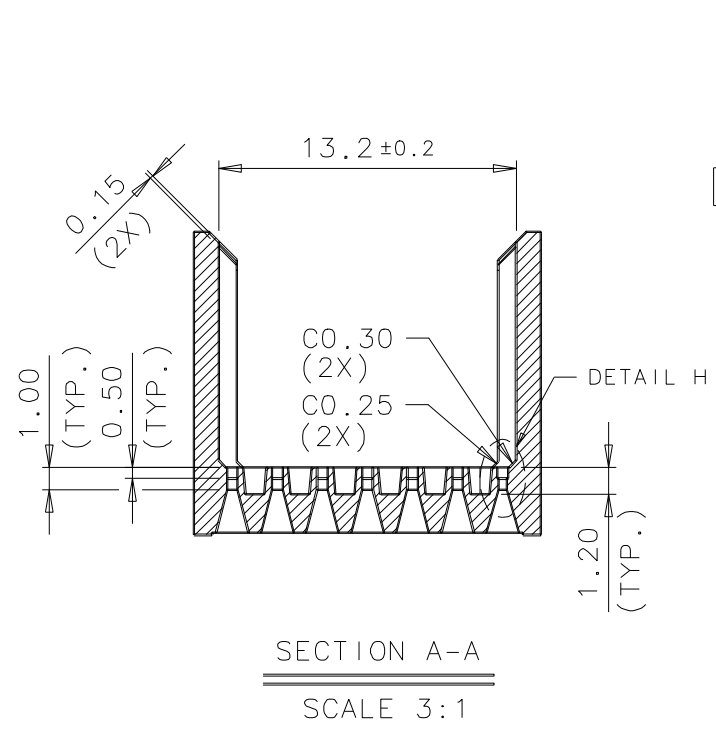
0 1 2 - \* 2 2 \* - 1 8 5

DIM.H:  
 1: 3.0 mm  
 2: 3.9 mm  
 3: 4.5 mm  
 4: 5.3 mm  
 5: 6.1 mm

1: BEFORE PRINTING  
 0: AFTER PRINTING

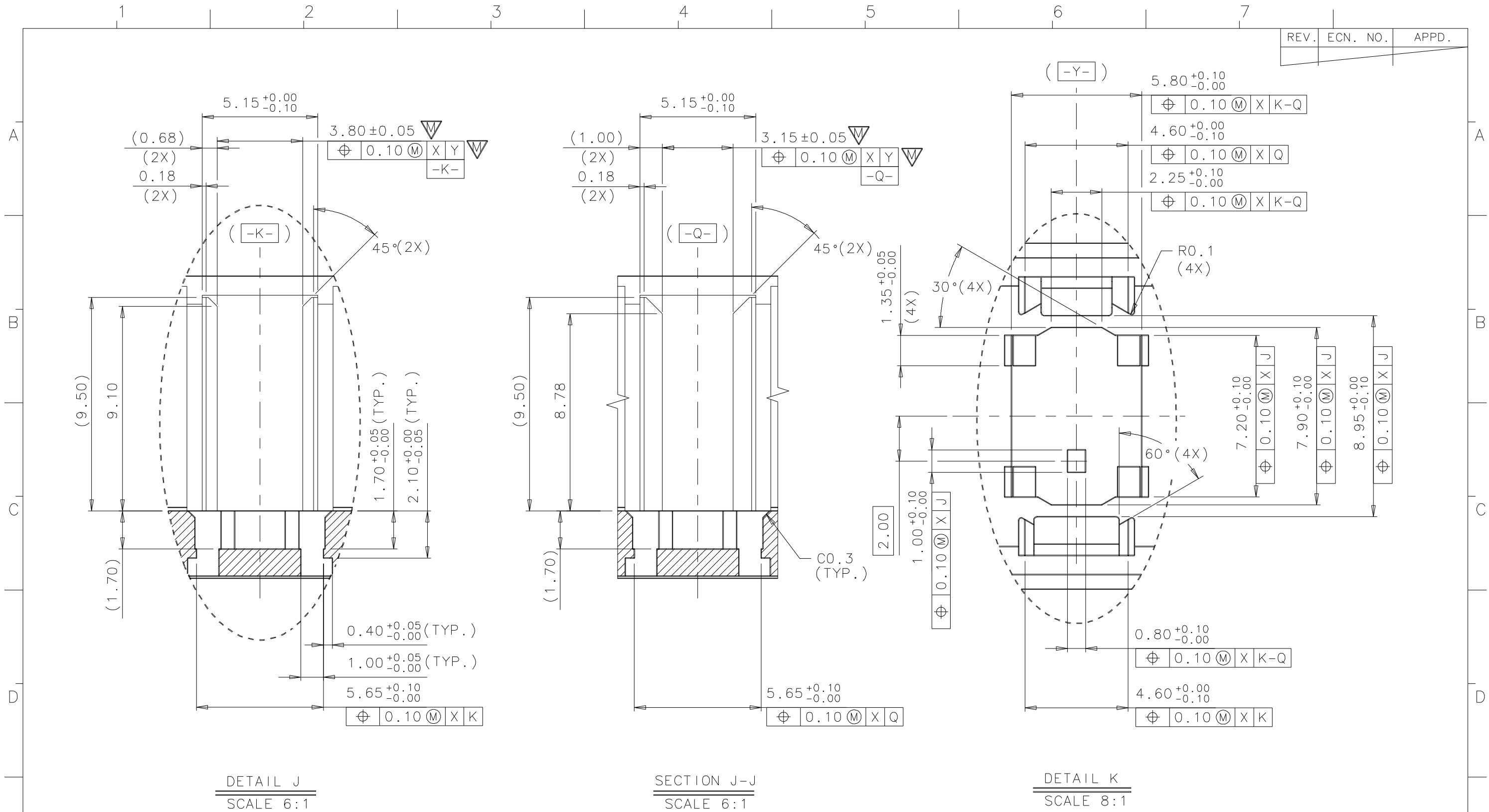
X. ±	X.° ± 5°	UNITS	mm	NAME (INTENDED USE)	<b>FOXCONN</b>		
.X ± 0.1	.X° ±	MAT'L	$\nabla$	HARD METRIC HEADER	HON HAI PRECISION IND. CO., LTD. TAIPEI, TAIWAN, R.O.C.		
.XX ± 0.05	.XX° ±	FINISH		PART NO. (INTENDED USE)	TITLE: SHROUD HOUSING TYPE A		
.XXX ±	.XXX° ±		APPD: L.C Wu 3/29'08	012-****-185	DWG NO.: 012-0000-185		
THESE DRAWINGS AND SPECIFICATIONS ARE THE PROPERTY OF HON HAI PRECISION IND. CO., LTD. AND SHALL NOT BE REPRODUCED, COPIED OR USED IN ANY MANNER WITHOUT THE PRIOR WRITTEN CONSENT OF HON HAI PRECISION IND. CO., LTD.				Q'TY	CHKD: CAMVARD 3/29'08		
				DR: JEFF 3/29'08	SCALE	SHEET	REV.
					2:1	1/3	F

REV.	ECN. NO.	APPD.



X. ±	X.° ± 5°	UNITS mm	NAME (INTENDED USE) HARD METRIC HEADER	<b>FOXCONN</b> HON HAI PRECISION IND. CO., LTD. TAIPEI, TAIWAN, R.O.C.						
.X ± 0.1	.X° ±	MAT'L	PART NO. (INTENDED USE) 012-****-185							
.XX ± 0.05	.XX° ±	FINISH	APPD: L.C Wu 3/29'08	TITLE: SHROUD HOUSING TYPE A						
.XXX ±	.XXX° ±		Q'TY	CHKD: CAMVARD 3/29'08	DWG NO.: 012-0000-185					
THESE DRAWINGS AND SPECIFICATIONS ARE THE PROPERTY OF HON HAI PRECISION IND. CO., LTD. AND SHALL NOT BE REPRODUCED, COPIED OR USED IN ANY MANNER WITHOUT THE PRIOR WRITTEN CONSENT OF HON HAI PRECISION IND. CO., LTD.			DR: JEFF 3/29'08	<table border="1"> <tr> <td>SCALE</td> <td>SHEET</td> <td>REV.</td> </tr> <tr> <td>N/A</td> <td>2/3</td> <td>F</td> </tr> </table>	SCALE	SHEET	REV.	N/A	2/3	F
SCALE	SHEET	REV.								
N/A	2/3	F								

REV.	ECN. NO.	APPD.



X. ±	X.° ± 5°	UNITS mm	NAME (INTENDED USE) HARD METRIC HEADER	<b>FOXCONN</b> HON HAI PRECISION IND. CO., LTD. TAIPEI, TAIWAN, R.O.C.
.X ± 0.1	.X° ±	MAT'L	PART NO. (INTENDED USE) 012-****-185	
.XX ± 0.05	.XX° ±	FINISH	APPD: L.C Wu 3/29'08	TITLE: SHROUD HOUSING TYPE A
.XXX ±	.XXX° ±		Q'TY	CHKD: CAMVARD 3/29'08
THESE DRAWINGS AND SPECIFICATIONS ARE THE PROPERTY OF HON HAI PRECISION IND. CO., LTD. AND SHALL NOT BE REPRODUCED, COPIED OR USED IN ANY MANNER WITHOUT THE PRIOR WRITTEN CONSENT OF HON HAI PRECISION IND. CO., LTD.			DR: JEFF 3/29'08	SCALE SHEET REV.
				N/A 3/3 F