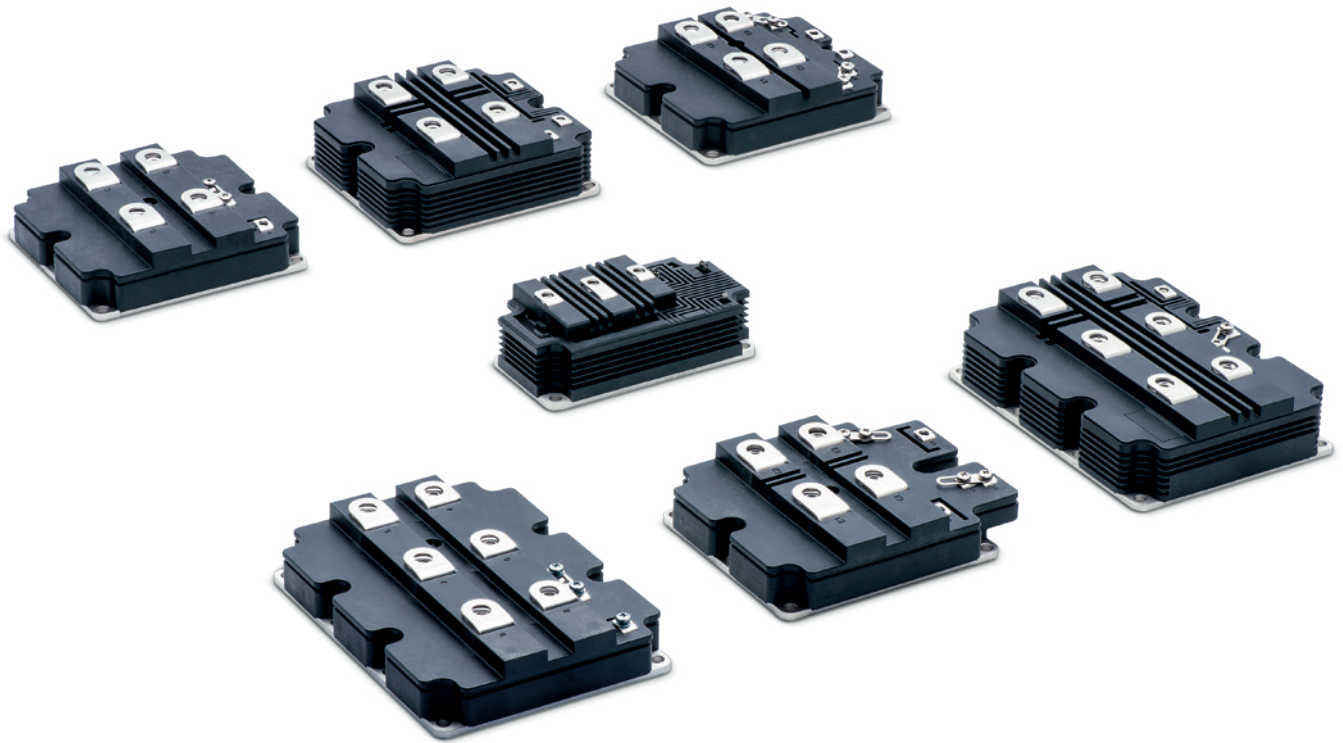


HiPak IGBT and diode modules

Demanding high-power applications such as traction inverters, medium-voltage drives, wind turbine converters, HVDC or FACTS are looking for the highest reliability IGBT modules.

Hitachi Energy's HiPak family of IGBT modules is the best fit to demanding applications, continuing to set new standards of robustness.

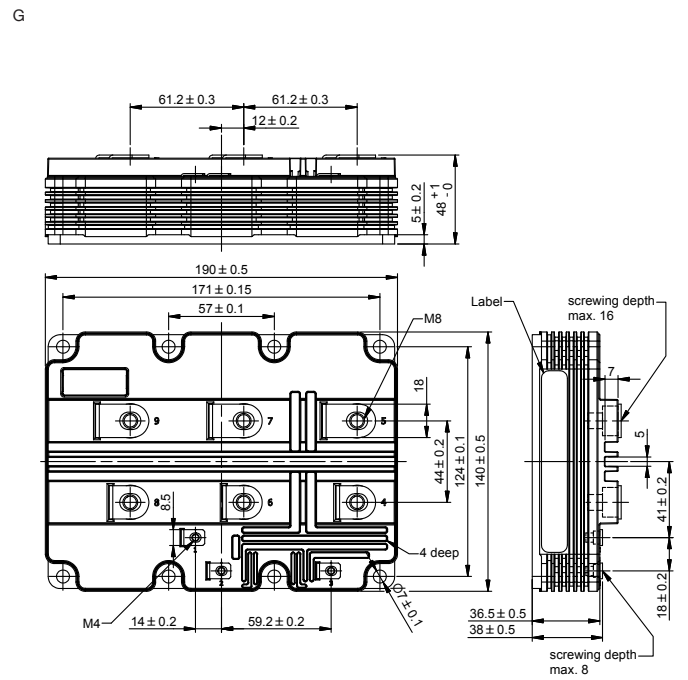
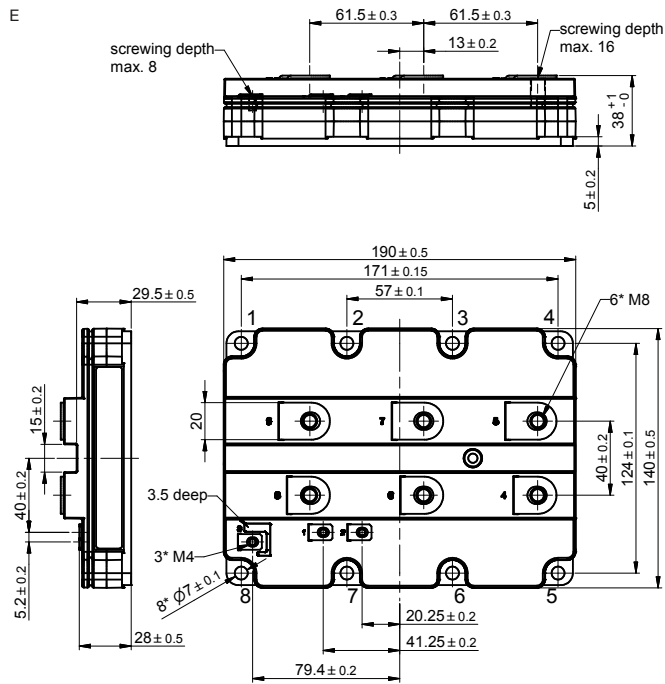
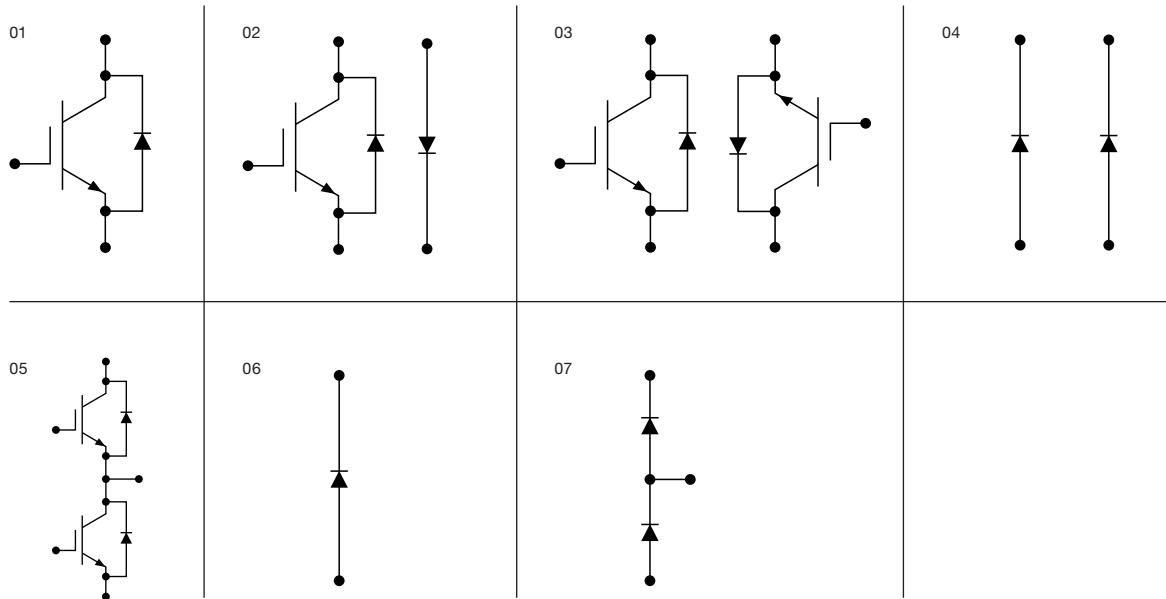
Hitachi Energy's HiPak IGBT modules are available from 1700 V to 6500 V in various configurations. They all feature low losses combined with soft-switching performance and record-breaking Safe Operating Area (SOA).

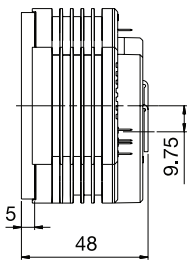
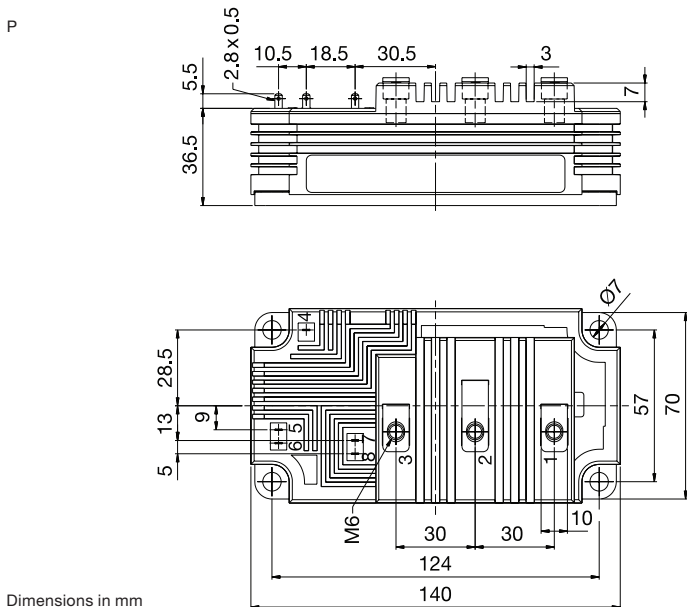
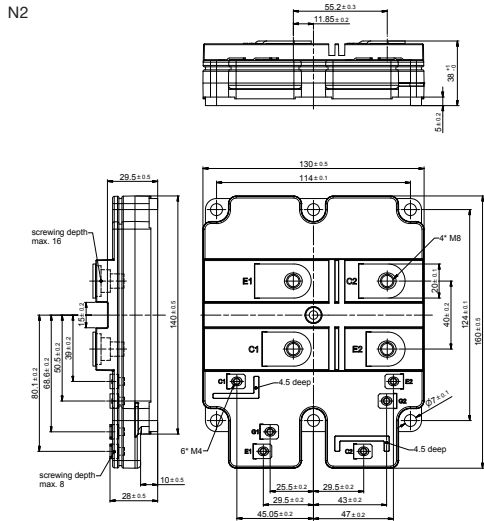
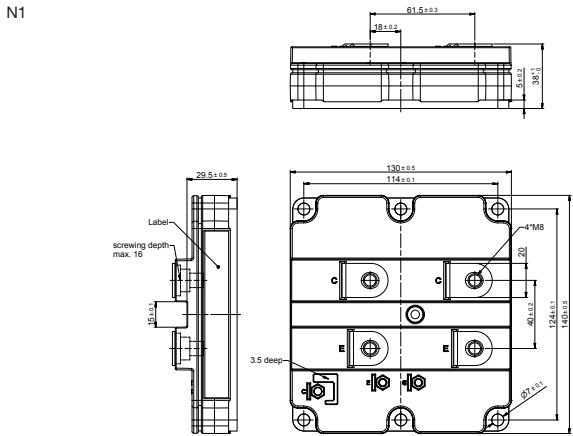
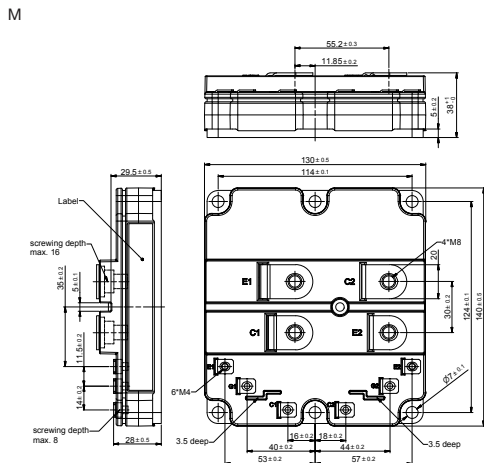
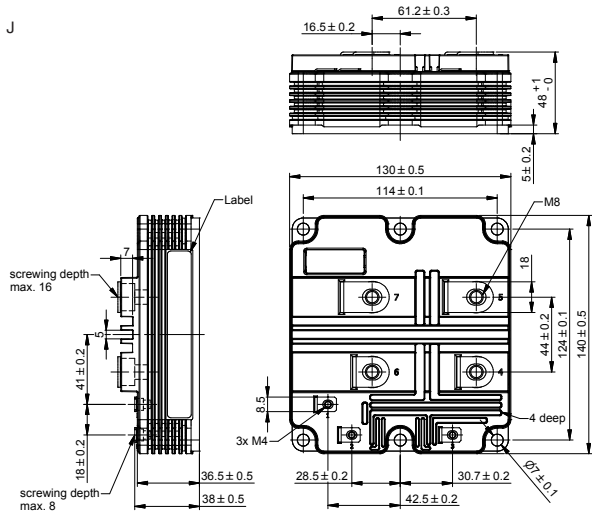


Part number T_{vj} (operational) up to 125 °C	Voltage V_{CES} (V)	Current I_C (A)	Configuration	V_{CEsat} (V) typ. 125 °C	V_F (V) typ. 125 °C	Housing
1.7 kV						
5SND 1200M170300 New	1700	2 x 1200	(3) – Dual IGBT	3.0	1.95	M
5SNE 1200M170300 New	1700	1200	(2) – Chopper	3.0	1.95	M
5SNA 1600N170300	1700	1600	(1) – Single IGBT	2.4	1.67	N1
5SNE 1600E170300	1700	1600	(2) – Chopper	2.4	1.67	E
5SNA 2400N170300	1700	2400	(1) – Single IGBT	3.0	1.95	N1
5SNA 2400E170305	1700	2400	(1) – Single IGBT	2.4	1.67	E
5SNE 2400E170300	1700	2400	(2) – Chopper	3.0	1.95	E
5SLA 3600E170300	1700	3600	(6) – Single Diode	–	1.95	E
5SNA 3600E170300	1700	3600	(1) – Single IGBT	3.0	1.95	E
3.3 kV						
5SNG 0250P330305	3300	2 x 250	(5) – Phase leg IGBT	3.1	2.25	P
5SND 0500N330300	3300	2 x 500	(3) – Dual IGBT	3.1	2.25	N2
5SLG 0500P330300	3300	2 x 500	(7) – Phase leg Diode	–	2.25	P
5SNA 0800N330100	3300	800	(1) – Single IGBT	3.8	2.35	N1
5SNE 0800E330100	3300	800	(2) – Chopper	3.8	2.35	E
5SNA 1000N330300	3300	1000	(1) – Single IGBT	3.1	2.25	N1
5SNE 1000E330300	3300	1000	(2) – Chopper	3.1	2.25	E
5SLD 1000N330300	3300	2 x 1000	(4) – Dual Diode	–	2.25	N1
5SNA 1200E330100	3300	1200	(1) – Single IGBT	3.8	2.35	E
5SNA 1200G330100	3300	1200	(1) – Single IGBT	3.85	2.35	G
5SLD 1200J330100	3300	2 x 1200	(4) – Dual Diode	–	2.35	J
5SNA 1200N330400 New	3300	1200	(1) – Single IGBT	2.9	2.20	N
5SNA 1500E330305	3300	1500	(1) – Single IGBT	3.1	2.25	E
5SNA 1800E330400 New	3300	1800	(1) – Single IGBT	2.9	2.20	E
5SNA 1800G330400 New	3300	1800	(1) – Single IGBT	2.9	2.20	G
4.5 kV						
5SNG 0150P450300	4500	2 x 150	(5) – Phase leg IGBT	3.5	3.45	P
5SLG 0600P450300	4500	2 x 600	(7) – Phase leg Diode	–	3.5	P
5SNA 0650J450300	4500	650	(1) – Single IGBT	3.7	3.4	J
5SLD 0650J450300	4500	2 x 650	(4) – Dual Diode	–	3.4	J
5SNA 0800J450300	4500	800	(1) – Single IGBT	3.55	3.5	J
5SNE 0800G450300	4500	800	(2) – Chopper	3.55	3.5	G
5SNA 1000J450300 New	4500	1000	(1) – Single IGBT	3.55	2.8	J
5SNA 1200G450300	4500	1200	(1) – Single IGBT	3.55	3.5	G
5SNA 1200G450350	4500	1200	(1) – Single IGBT	3.55	3.5	G
5SLD 1200J450350	4500	2 x 1200	(4) – Dual Diode	–	3.5	J
5SLD 1500J450300 New	4500	2 x 1500	(4) – Dual Diode	–	2.8	J
5SNA 1500E450300 New	4500	1500	(1) – Single IGBT	3.55	2.8	E
5SNA 1500G450300 New	4500	1500	(1) – Single IGBT	3.55	2.8	G
5SNA 1500G450350 New	4500	1500	(1) – Single IGBT	3.55	2.8	G
6.5 kV						
5SNA 0400J650100	6500	400	(1) – Single IGBT	5.4	3.4	J
5SNA 0500J650300	6500	500	(1) – Single IGBT	3.9	3.4	J
5SNA 0600G650100	6500	600	(1) – Single IGBT	5.4	3.4	G
5SLD 0600J650100	6500	2 x 600	(4) – Dual Diode	–	3.4	J
5SNA 0750G650300	6500	750	(1) – Single IGBT	3.9	3.4	G
5SNA 1000G650300	6500	1000	(1) – Single IGBT	4.1	3.3	G
5SLD 1000J650300 New	6500	2 x 1000	(4) – Dual Diode	–	3.3	J

Please refer to page 63 for part numbering structure.

Configurations





Dimensions in mm